

 **EVERFLOW™**

# TUBULAR & DRAINAGE

140+ NEW ITEMS



CATALOG



## QUALITY

---

Beneath each and every Everflow label lies our dedication and commitment to bringing you the world's finest engineered products. We search the globe to source our products from some of the world's best manufacturing facilities, where production is done with the highest levels of craftsmanship and quality. Manufacturing facilities conform to ISO 9001 standards. Products meet the highest applicable UL/FM, CSA & ASTM standards.



## SERVICE

---

Everflow customers have become accustomed to our unparalleled level of customer service. Our knowledgeable and courteous staff are always available and ready to provide you with superb service, while helping you get the products & information you need. We keep an extensive inventory on hand, so that when you place your order, you know it's in stock and ready to ship.



## RELIABILITY

---

Our distribution network is one of the most reliable in the industry. We utilize the most advanced technologies, enabling our customers increased flexibility and faster turnaround on orders. Our state-of-the-art distribution center ensures the efficiency and reliability that you can count on.



TEXAS

NEW JERSEY

ILLINOIS

# TABLE OF CONTENTS

## TUBULAR

---

Brass Traps	Pg. 5-7
Brass Tubular	Pg. 8-11
Cast DWV Traps	Pg. 12
Nuts & Washers	Pg. 14
Plastic Tubular	Pg. 16-19
Flexible Plastic Tubular	Pg. 20
Drain/Trap Connectors	Pg. 14

## DRAINAGE

---

Trip Lever	Pg. 15
Lavatory Drains	Pg. 27-28
Strainers	Pg. 23-25
Strainer Baskets	Pg. 25-26
CI Closet Flanges	Pg. 31
Brass Closet Flanges	Pg. 31
PVC Closet Flanges	Pg. 32
Repair Flanges	Pg. 32
PVC Shower Drain	Pg. 33

## PLUGS

---

Boiler Plugs	Pg. 33
Lead Plugs	Pg. 33
Brass Cleanout Plugs	Pg. 33

## ACCESSORIES

---

Shower Rods	Pg. 21-22
Urinal Vacuum Breaker Parts	Pg. 29
Brass Spuds	Pg. 29
Closet Bolts	Pg. 31
Tank Lever	Pg. 29
Trap Air Vent	Pg. 29
Chrome Plated Flanges	Pg. 30
Floor/Ceiling Plates	Pg. 30
Pipe Clamps	Pg. 36
Pipe Strap	Pg. 37
Pipe Thread Tape	Pg. 37
Mesh Cloth	Pg. 38
PVC Cement	Pg. 38
Sump Pumps	Pg. 39
Thermocouples	Pg. 37
Raven Premium Thread Tape	Pg. 41

## TOOLS

---

Copper Brush	Pg. 38
Inside Pipe Cutter	Pg. 39
Screwdrivers	Pg. 39
Tube Cutters	Pg. 40
Termination Vent Screens	Pg. 42

**THE PROFESSIONAL'S CHOICE**

 **EVERFLOW™**

**FLEXCRAFT®**

**RAVEN™**  
SPECIALTY PRODUCTS

## “P” Trap Less Cleanout



Individually Boxed with Barcode • S/J Connect with Flange • Brass



PART #	SIZE	FINISH	GAUGE	QTY
12815	1-1/4"	Chrome Plated	22GA	25
12812	1-1/2"	Chrome Plated	22GA	25
12812-20	1-1/2"	Chrome Plated	20GA	25
12714	1-1/4"	Chrome Plated	17GA	25
12712	1-1/2"	Chrome Plated	17GA	25



### With Box Escutcheon

PART #	SIZE	FINISH	GAUGE	QTY
12812-20-S	1-1/2"	Chrome Plated	20GA	25
12714-S	1-1/4"	Chrome Plated	17GA	25
12712-S	1-1/2"	Chrome Plated	17GA	25

## “P” Trap With Cleanout



Individually Boxed with Barcode • S/J Connect with Flange • Brass



PART #	SIZE	FINISH	GAUGE	QTY
12813	1-1/2"	Chrome Plated	20GA	25
12715	1-1/4"	Chrome Plated	17GA	25
12713	1-1/2"	Chrome Plated	17GA	25



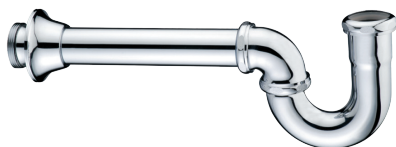
### With Box Escutcheon

PART #	SIZE	FINISH	GAUGE	QTY
12813-S	1-1/2"	Chrome Plated	20GA	25
12715-S	1-1/4"	Chrome Plated	17GA	25
12713-S	1-1/2"	Chrome Plated	17GA	25

## Utility/Milwaukee “P” Trap Less Cleanout



Individually Boxed with Barcode • Brass



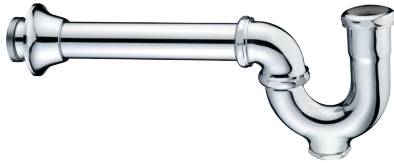
PART #	SIZE	FINISH	GAUGE	QTY
12816	1-1/2"	Chrome Plated	20GA	25
12818	1-1/2"	Chrome Plated	17GA	25

# TRAPS

## Utility/Milwaukee "P" Trap With Cleanout



Individually Boxed with Barcode • Brass



PART #	SIZE	FINISH	GAUGE	QTY
12814	1-1/2"	Chrome Plated	20GA	25
12817	1-1/2"	Chrome Plated	17GA	25

## 2" Outlet Milwaukee "P" Trap With Cleanout



Connects Directly w/ 2" Pipe • S/J Connect with Flange • Brass

NEW



PART #	SIZE	FINISH	GAUGE	QTY
12802	2" x 1-1/2"	Chrome Plated	17GA	25

## "S" Trap With Flange



Individually Boxed with Barcode • S/J Connect with Flange • Brass



PART #	SIZE	FINISH	GAUGE	QTY
12912	1-1/2"	Chrome Plated	22GA	25
12913	1-1/4"	Chrome Plated	20GA	25
12914	1-1/2"	Chrome Plated	20GA	25
12915	1-1/4"	Chrome Plated	17GA	25
12916	1-1/2"	Chrome Plated	17GA	25

### With Box Escutcheon

PART #	SIZE	FINISH	GAUGE	QTY
12913-S	1-1/4"	Chrome Plated	20GA	25
12914-S	1-1/2"	Chrome Plated	20GA	25
12915-S	1-1/4"	Chrome Plated	17GA	25
12916-S	1-1/2"	Chrome Plated	17GA	25

## NY Regular Trap With Cleanout



Individually Boxed with Barcode • Includes Solid Brass Nut • Brass



PART #	SIZE	FINISH	QTY
2124	1-1/2" x 1-1/4"	Rough Brass	25
2112	2" x 1-1/2"	Rough Brass	25
11114	1-1/2" x 1-1/4"	Chrome Plated	25
2112A	2" x 1-1/2"	Chrome Plated	25

## LA Pattern Trap With Cleanout



Individually Boxed with Barcode • Includes Solid Brass Nut • Brass



PART #	SIZE	FINISH	QTY
21326	2" IPS x 1-1/2"	Rough Brass	15
11315	1-1/2" IPS x 1-1/4"	Chrome Plated	25

## LA Pattern Trap Less Cleanout



Individually Boxed with Barcode • Includes Solid Brass Nut • Brass



PART #	SIZE	FINISH	QTY
21315	1-1/2" IPS x 1-1/2"	Rough Brass	25
21316	2" IPS x 1-1/2"	Rough Brass	15
21317	1-1/2" SWT x 1-1/2"	Rough Brass	25
11314	1-1/2" IPS x 1-1/4"	Chrome Plated	25

## Low Seal Bath Trap



Individually Boxed with Barcode • Brass



PART #	SIZE	FINISH	QTY
21415	1-1/2"	Rough Brass	25

## Swing "Tee" Trap



Individually Boxed with Barcode • Includes Solid Brass Nut • Brass



PART #	SIZE	FINISH	QTY
2122	2" x 1-1/2"	Rough Brass	15

## 3-Way Tee



Brass



PART #	SIZE	FINISH	QTY
21515B	1-1/2" With Nut & Washer	Rough Brass	25

# TUBULAR

## Slip Joint Waste Bend



Individually Boxed with Barcode • S/J Connect • Nuts & Washers • Brass



PART #	SIZE	FINISH	GAUGE	QTY
2194	1-1/2" x 4"	Rough Brass	22GA	25
2196	1-1/2" x 6"	Rough Brass	22GA	25
2198	1-1/2" x 8"	Rough Brass	22GA	25
21910	1-1/2" x 10"	Rough Brass	22GA	25
21912	1-1/2" x 12"	Rough Brass	22GA	25
21915	1-1/2" x 15"	Rough Brass	22GA	25
21918	1-1/2" x 18"	Rough Brass	22GA	25
21924	1-1/2" x 24"	Rough Brass	22GA	25
21930	1-1/2" x 30"	Rough Brass	22GA	25
21936	1-1/2" x 36"	Rough Brass	22GA	25
2196-20	1-1/2" x 6"	Rough Brass	20GA	25
2198-20	1-1/2" x 8"	Rough Brass	20GA	25
21912-20	1-1/2" x 12"	Rough Brass	20GA	25
21918-20	1-1/2" x 18"	Rough Brass	20GA	25
21924-20	1-1/2" x 24"	Rough Brass	20GA	25
31912	1-1/2" x 12"	Chrome Plated	22GA	25
41912	1-1/2" x 12"	Rough Brass	17GA	25
41918	1-1/2" x 18"	Rough Brass	17GA	25
41924	1-1/2" x 24"	Rough Brass	17GA	25
51912	1-1/2" x 12"	Chrome Plated	17GA	25
51918	1-1/2" x 18"	Chrome Plated	17GA	25

## Slip Joint Waste Bend



S/J Connect • With 2 Nuts and 2 Washers • Brass • UPC Barcode

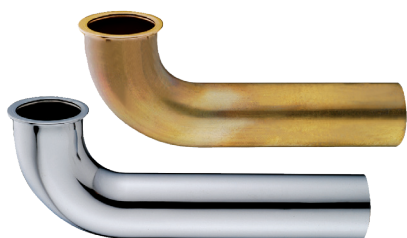


PART #	SIZE	FINISH	GAUGE	QTY
1194	1-1/4" x 4"	Chrome Plated	22GA	25
1196	1-1/4" x 6"	Chrome Plated	22GA	25
1198	1-1/4" x 8"	Chrome Plated	22GA	25
11912	1-1/4" x 12"	Chrome Plated	22GA	25
6196	1-1/4" x 6"	Chrome Plated	17GA	25
6198	1-1/4" x 8"	Chrome Plated	17GA	25
61912	1-1/4" x 12"	Chrome Plated	17GA	25

## Direct Connect Waste Bend



Individually Boxed with Barcode • Brass



PART #	SIZE	FINISH	GAUGE	QTY
2218	1-1/2" x 8"	Rough Brass	22GA	25
22112	1-1/2" x 12"	Rough Brass	22GA	25
22118	1-1/2" x 18"	Rough Brass	22GA	25
22124	1-1/2" x 24"	Rough Brass	22GA	25
52112	1-1/2" x 12"	Chrome Plated	17GA	25
42112	1-1/2" x 12"	Rough Brass	17GA	25
42118	1-1/2" x 18"	Rough Brass	17GA	25

## Double Waste Bend



Individually Boxed with Barcode • Brass



PART #	SIZE	FINISH	GAUGE	QTY
22024	1-1/2" x 24"	Rough Brass	22GA	25
42024	1-1/2" x 24"	Rough Brass	17GA	25

## Flanged Sink Tailpiece



Direct Connect • Brass • UPC Barcode



PART #	SIZE	FINISH	GAUGE	QTY
2236	1-1/2" x 6"	Rough Brass	22GA	25
2238	1-1/2" x 8"	Rough Brass	22GA	25
22312	1-1/2" x 12"	Rough Brass	22GA	25
22318	1-1/2" x 18"	Rough Brass	22GA	25
22324	1-1/2" x 24"	Rough Brass	22GA	25
2236-20	1-1/2" x 6"	Rough Brass	20GA	25
2238-20	1-1/2" x 8"	Rough Brass	20GA	25
22312-20	1-1/2" x 12"	Rough Brass	20GA	25
3236	1-1/2" x 6"	Chrome Plated	22GA	25
3238	1-1/2" x 8"	Chrome Plated	22GA	25
32312	1-1/2" x 12"	Chrome Plated	22GA	25
42312	1-1/2" x 12"	Rough Brass	17GA	25
42318	1-1/2" x 18"	Rough Brass	17GA	25
52312	1-1/2" x 12"	Chrome Plated	17GA	25

## Slip Joint Extension Tube



S/J Connect • With Nuts and Washers • Brass • UPC Barcode



PART #	SIZE	FINISH	GAUGE	QTY
2248	1-1/2" x 8"	Rough Brass	22GA	25
22412	1-1/2" x 12"	Rough Brass	22GA	25
22418	1-1/2" x 18"	Rough Brass	22GA	25
22412-20	1-1/2" x 12"	Rough Brass	20GA	25
1246	1-1/4" x 6"	Chrome Plated	22GA	25
1248	1-1/4" x 8"	Chrome Plated	22GA	25
12412	1-1/4" x 12"	Chrome Plated	22GA	25
3246	1-1/2" x 6"	Chrome Plated	22GA	25
3248	1-1/2" x 8"	Chrome Plated	22GA	25
32412	1-1/2" x 12"	Chrome Plated	22GA	25
52412	1-1/2" x 12"	Chrome Plated	17GA	25
62412	1-1/4" x 12"	Rough Brass	17GA	25
42412	1-1/2" x 12"	Rough Brass	17GA	25

# TUBULAR

## Double Offset Flanged x Threaded

Direct Connect x S/J Connect • With Nut and Washer



NEW



PART #	SIZE	FINISH	GAUGE	QTY
22212QHU	1-1/2"	Rough Brass	22GA	25

## Double Offset

S/J Connect • With Nuts and Washers • Brass • UPC Barcode



PART #	SIZE	FINISH	GAUGE	QTY
12212	1-1/4"	Chrome Plated	22GA	25
22212	1-1/2"	Rough Brass	22GA	25
32212	1-1/2"	Chrome Plated	22GA	25
22212-20	1-1/2"	Rough Brass	20GA	25
62221	1-1/4"	Rough Brass	17GA	25
42212	1-1/2"	Rough Brass	17GA	25
52212	1-1/2"	Chrome Plated	17GA	25

## Slip Joint Coupling

S/J Connect • Brass • UPC Barcode



PART #	SIZE	FINISH	GAUGE	QTY
11815	1-1/2"	Chrome Plated	22GA	25

## Threaded Tube

S/J Connect • Threaded Both Ends • Brass • UPC Barcode



PART #	SIZE	FINISH	GAUGE	QTY
22512	1-1/2" x 12"	Rough Brass	22GA	25
22518	1-1/2" x 18"	Rough Brass	22GA	25
22512-20	1-1/2" x 12"	Rough Brass	20GA	25
32512	1-1/2" x 12"	Chrome Plated	22GA	25
42512	1-1/2" x 12"	Rough Brass	17GA	25
42524	1-1/2" x 24"	Rough Brass	17GA	25
52512	1-1/2" x 12"	Chrome Plated	17GA	25
1258	1-1/4" x 8"	Chrome Plated	22GA	25
12512	1-1/4" x 12"	Chrome Plated	22GA	25
51217	1-1/4" x 12"	Chrome Plated	17GA	25

## Brass Dishwasher Tailpiece



1/2" Branch • Brass • UPC Barcode



PART #	SIZE	FINISH	GAUGE	QTY
<b>21312</b>	1-1/2" x 12"	Rough Brass	22GA	25
<b>21412</b>	1-1/2" x 12"	Rough Brass	20GA	25
<b>41312</b>	1-1/2" x 12"	Rough Brass	17GA	25

## Brass Washer Machine Tailpiece



3/4" Branch • Brass • UPC Barcode



PART #	SIZE	FINISH	GAUGE	QTY
<b>21313</b>	1-1/2" x 12"	Rough Brass	22GA	25
<b>21413</b>	1-1/2" x 12"	Rough Brass	20GA	25
<b>41313</b>	1-1/2" x 12"	Rough Brass	17GA	25

## Dishwasher Slip Joint Waste Bend



1/2" Copper Inlet • Brass • Available in Left or Right Inlet

**NEW**

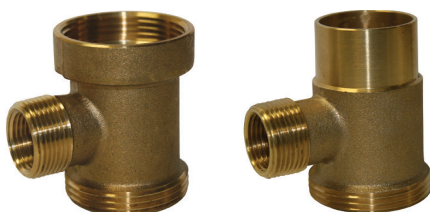


PART #	SIZE	FINISH	GAUGE	QTY
<b>21412-ELL</b>	1-1/2" x 12" Left	Rough Brass	20GA	25
<b>21412-ELR</b>	1-1/2" x 12" Right	Rough Brass	20GA	25

## Brass Washing Machine Tee



Brass • UPC Barcode



PART #	SIZE	FINISH	QTY
<b>WMT112S</b>	1-1/2" FIP x 1-1/2" SJ	Rough Brass	10
<b>WMT112M</b>	1-1/2" FIP x 1-1/2" MIP	Rough Brass	10

# CAST BRASS DWV

**NEW LINE**

## Union DWV P-Trap



Less Cleanout



- For use with residential and commercial drain, waste and vent systems

PART #	SIZE / DESCRIPTION	INNER	MASTER
112CCUPTLCO	1-1/2" C x 1-1/2" C	10	20

## Union DWV P-Trap



Less Cleanout



- For use with residential and commercial drain, waste and vent systems

PART #	SIZE / DESCRIPTION	INNER	MASTER
112CSJUPTLCO	1-1/2" C x 1-1/2" SJ	10	20

## DWV P-Trap



With Cleanout



- For use with residential and commercial drain, waste and vent systems

PART #	SIZE / DESCRIPTION	INNER	MASTER
112C114SJPT/CO	1-1/2" C x 1-1/4" SJ	10	20
112CSJPT/CO	1-1/2" C x 1-1/2" SJ	10	20

## DWV P-Trap



With Cleanout



- For use with residential and commercial drain, waste and vent systems

PART #	SIZE / DESCRIPTION	INNER	MASTER
2CCPTRAP/CO	2" C x 2" C W/ C-O	5	10

## DWV P-Trap



Less Cleanout



- For use with residential and commercial drain, waste and vent systems

PART #	SIZE / DESCRIPTION	INNER	MASTER
2CCPTRAPLCO	2" C x 2" C L/C-O	5	10

## Copper x Slip Joint Adapters



Cast Copper • Adapts 1-1/2" Tubular Traps



PART #	SIZE / DESCRIPTION	INNER	MASTER
112C112SJD	1-1/2" C x 1-1/2" SJ / BR Nuts	10	60
112C114SJD	1-1/2" C x 1-1/4" SJ / BR Nuts	10	60

# CAST BRASS DWV

## Round Trap Bushings

**RAVEN**  
SPECIALTY PRODUCTS



PART #	SIZE / DESCRIPTION	INNER	MASTER
112CMRTB	1-1/2" C x M	25	100
2CMRTB	2" C x M	50	100

## Hex Trap Bushings

**RAVEN**  
SPECIALTY PRODUCTS



PART #	SIZE / DESCRIPTION	INNER	MASTER
112CMHTB	1-1/2" C x M	10	100
2CMHTB	2" C x M	10	100

## Pressure Adapters

**RAVEN**  
SPECIALTY PRODUCTS



PART #	SIZE / DESCRIPTION	INNER	MASTER
112C2MA	1-1/2" C x 2" M	10	60

## No Hub Adapters

**RAVEN**  
SPECIALTY PRODUCTS



PART #	SIZE / DESCRIPTION	INNER	MASTER
2CNHA	2" C	10	100
112C2NHA	2" x 1-1/2" C	10	100

## DWV C X M Adapters

**RAVEN**  
SPECIALTY PRODUCTS



PART #	SIZE / DESCRIPTION	INNER	MASTER
112CMA	1-1/2" C x M	10	60

## Dandy Clean Out Tee

**RAVEN**  
SPECIALTY PRODUCTS

With Plug



PART #	SIZE / DESCRIPTION	INNER	MASTER
112CCDWCO	1-1/2" C	40	40
2CCDWCO	2" C	25	25

## End Clean Out

**RAVEN**  
SPECIALTY PRODUCTS

With Plug



PART #	SIZE / DESCRIPTION	INNER	MASTER
122CCECO	1-1/2" C	40	40
2CCECO	2" C	25	25

# TUBULAR

## Die Cast Slip Joint Nuts



PART #	SIZE	FINISH	INNER	MASTER
1312	1-1/2"	Chrome Plated	100	500
1314	1-1/4"	Chrome Plated	100	500
1315	1-1/2" x 1-1/4"	Chrome Plated	100	500
22612	1-1/2"	Rough Brass	100	500

## Solid Brass Slip Joint Nut



PART #	SIZE	FINISH	INNER	MASTER
22614	1-1/2"	Chrome Plated	100	500
22613	1-1/2"	Rough Brass	100	500
22615	1-1/2" x 1-1/4"	Rough Brass	100	500

## Slip Cap



PART #	SIZE	FINISH	INNER	MASTER
1313	1-1/2"	Chrome Plated	100	500

## Slip Joint Washers

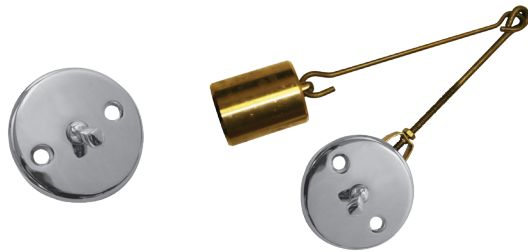


PART #	SIZE	INNER	MASTER
1321	1-1/2" x 1-1/4"	250	1000
1322	1-1/4"	250	1000
1323	1-1/2"	250	1000
1324	1-1/2" Tailpiece	250	1000

## Brass Linkage Assembly



Includes Face Plate



PART #	DESCRIPTION	INNER	MASTER
5113RK	Fit-all assembly	5	25
5113L	Linkage Replacement	5	25
5113FPSC	Face Plate Screws	5	25
5113FP	Chrome - Face Plate	10	50

## Drain / Trap & Tubular Connectors



- Connects sink traps to hose drain pipe
- Connects DWV piping to brass or PVC tubular



PART #	SIZE	INNER	MASTER
4812	1-1/2" x 1-1/4"	1	50
4814	1-1/2" Tub x 1-1/2" Tub	1	50
4813	2" x 1-1/2"	1	50

## Trip Lever Bath Waste

20 Gauge Brass Tubular • Boxed w/ Barcode

- 20 Gauge brass tubular
- 1-1/2" Drain
- 2" Hole overflow plate

PART #	DESCRIPTION	INNER	MASTER
5113	Standard	1	12
5114	Fits 18" - 24" Tub	1	12



## Standing Bath Waste & Overflow

Combination Male & Female • Brass Body

- Size approximately 1-1/2" x 19"

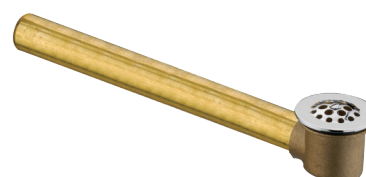
PART #	DESCRIPTION	INNER	MASTER
5112	Combo male and female	1	10



## Brass Waste & Overflow Shoe

Chrome Strainer Body

PART #	DESCRIPTION	INNER	MASTER
5113BS	Brass shoe	1	20



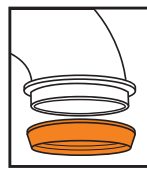
# PLASTIC TUBULAR

## MasterSeal P-Trap



With Reversible J-Bend

**NEW**



**MasterSeal**  
PREMIUM TRAP DESIGN

- Mastered premium trap design
- Reducing TPR washers
- Polypropylene plastic construction
- Marvel connect adapter included



PART #	SIZE	DESCRIPTION	INNER	MASTER
<b>P12812MR</b>	1-1/2"	P-Trap Master Seal w/ Marvel Connect	1	50

## P-Trap w/Adapter



Marvel Connect Adapter



- Easy installation
- Polypropylene plastic construction
- Marvel connect adapter included



PART #	SIZE	DESCRIPTION	INNER	MASTER
<b>P12812M</b>	1-1/2"	P-Trap w/ Adapter White	1	50
<b>B12812M</b>	1-1/2"	P-Trap w/ Adapter Black	1	50
<b>P12815MT</b>	1-1/2"	P-Trap w/ Adapter & TPR Washer	1	50

## P-Trap



Plain End



- Easy installation
- Polypropylene plastic construction



PART #	SIZE	DESCRIPTION	INNER	MASTER
<b>P12815</b>	1-1/4"	P-Trap White	1	50
<b>P12812</b>	1-1/2"	P-Trap White	1	50
<b>B12815</b>	1-1/4"	P-Trap Black	1	50

## P-Trap w/Adapter & Flange



Marvel Connect & Box Flange Escutcheon



- Available with TPR Washer
- Polypropylene plastic construction



PART #	SIZE	DESCRIPTION	INNER	MASTER
<b>P12815A</b>	1-1/4"	P-Trap w/ Adapter White	1	50
<b>P12812A</b>	1-1/2"	P-Trap w/ Adapter White	1	50
<b>P12812AT</b>	1-1/2"	P-Trap w/ Adapter & TPR Washer White	1	50
<b>B12815AT</b>	1-1/4"	P-Trap w/ Adapter & TPR Washer Black	1	50
<b>P12812ATC</b>	1-1/2"	P-Trap w/ Adapter & TPR Washer Chrome	1	25
<b>P12815ATC</b>	1-1/4"	P-Trap w/ Adapter & TPR Washer Chrome	1	50

# PLASTIC TUBULAR

## End Outlet Waste w/Slip Joint **FLEXCRAFT**

16" Length



- Easy installation
- 1-1/2" diameter
- Available with TPR Washer
- Polypropylene plastic construction



PART #	SIZE	DESCRIPTION	INNER	MASTER
P23416	1-1/2" x 16"	End Outlet Waste w/Slip Joint	1	50
P23416T	1-1/2" x 16"	End Outlet w/Slip Joint & TPR Washer	1	50

## Telescope End Outlet Waste **FLEXCRAFT**

11"-17" Length • With Branch



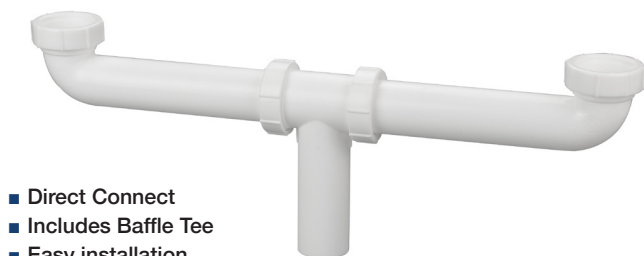
- Direct Connect
- Easy installation
- 1-1/2" diameter
- 11" - 17" Telescopic Waste Arm with Branch
- Polypropylene plastic construction



PART #	SIZE	DESCRIPTION	INNER	MASTER
P23917	1-1/2" x 17"	Telescope End Outlet w/ Branch	1	50

## Center Outlet w/Slip Joint **FLEXCRAFT**

Polypropylene Plastic • 16" Length



- Direct Connect
- Includes Baffle Tee
- Easy installation
- 1-1/2" diameter
- 16" Length Tubular Center Outlet Waste
- Polypropylene plastic construction



PART #	SIZE	DESCRIPTION	INNER	MASTER
P23616	1-1/2" x 16"	Center Outlet Waste w/Slip Joint	1	50

## S-Trap w/Adapter **FLEXCRAFT**

Polypropylene Plastic • Marvel Connect & Box Flange



- For use in tubular drain applications
- Marvel Connect Adapter included
- Box-style escutcheon Included
- TPR Washer included
- Available in 1-1/4" & 1-1/2" inlet



PART #	SIZE	DESCRIPTION	INNER	MASTER
P12916AT	1-1/2"	S-Trap w/ Adapter & TPR Washer	1	40
P12915AT	1-1/4"	S-Trap w/ Adapter & TPR Washer	1	50

## Branch Tailpiece **FLEXCRAFT**

Polypropylene Plastic • 8" Length



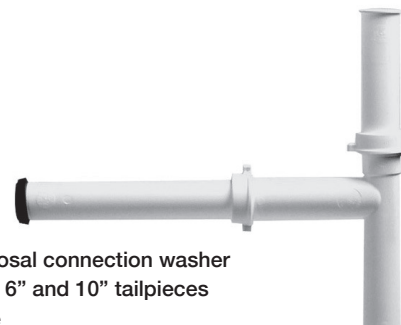
- Hi-Line connection
- Easy installation
- 1-1/2" diameter
- 3/4" branch
- Maximum working pressure 10 psi
- Polypropylene plastic construction



PART #	SIZE	DESCRIPTION	INNER	MASTER
P21313	1-1/2"	Branch Tailpiece White	1	50
B21313	1-1/2"	Branch Tailpiece Black	1	50
P21315	1-1/2"	Branch Tailpiece 1/2" Branch Slip Joint	1	50
P21317	1-1/2"	Branch Tailpiece Slip Joint 1/2" or 3/4" Branch	1	50

## Telescopic Tee **FLEXCRAFT**

Polypropylene Plastic • w/ Rubber Washer • Waste Disposal



- Includes disposal connection washer
- Includes both 6" and 10" tailpieces
- Tee has baffle



PART #	SIZE	DESCRIPTION	INNER	MASTER
P23918	-	Telescopic Tee White	1	25
B23918	-	Telescopic Tee Black	1	25

# PLASTIC TUBULAR

## Offset Trap



Polypropylene Plastic



- For use in tubular drain applications
- Easy installation
- 1-1/2" diameter
- Includes nuts and rubber washers
- Polypropylene plastic construction



PART #	SIZE	DESCRIPTION	INNER	MASTER
P22212	1-1/2"	Offset Trap White	1	50
B22212	1-1/2"	Offset Trap Black	1	50

## Extension Tube



Polypropylene Plastic • 6" & 12" Length



- Easy installation
- Available in 6" & 12" Length
- Tubular extension tube
- Polypropylene plastic construction



PART #	SIZE	DESCRIPTION	INNER	MASTER
P2246	1-1/2" x 6"	Extension Tube Slip Joint	1	50
P12412	1-1/4" x 12"	Extension Tube	1	50
P2248	1-1/2" x 8"	Extension Tube	1	50
P22412	1-1/2" x 12"	Extension Tube	1	50
P1246	1-1/4" x 6"	Extension Tube	1	50
P1246S	1-1/4" x 6"	Extension Tube Solvent Weld	1	50
P2248S	1-1/2" x 8"	Extension Tube Solvent Weld	1	50
P22412S	1-1/2" x 12"	Extension Tube Solvent Weld	1	50

## Flanged Tailpiece



Polypropylene Plastic • 8" & 12" Length



- Easy installation
- IAPMO listed
- Meets ASTM F409
- Flanged end
- Polypropylene plastic construction



PART #	SIZE	DESCRIPTION	INNER	MASTER
P2238	1-1/2" x 8"	Flanged Tailpiece	1	50
P22312	1-1/2" x 12"	Flanged Tailpiece	1	50

## Double End Extension Tube



Polypropylene Plastic • 16" Length



- Easy installation
- Tubular extension tube
- Polypropylene plastic construction



PART #	SIZE	DESCRIPTION	INNER	MASTER
P23816	1-1/2" x 16"	Double End Extension Tube White	1	50
B23816	1-1/2" x 16"	Double End Extension Tube Black	1	50
B22816	1-1/4" x 16"	Double End Extension Tube Black	1	50

## Double End Flanged Tube



Polypropylene Plastic • 16" Length



- Easy installation
- IAPMO listed
- Meets ASTM F409
- Available with TPR Washer
- Flanged end with 2 Nuts and 2 Washers
- Polypropylene plastic construction



PART #	SIZE	DESCRIPTION	INNER	MASTER
P22316	1-1/2"	Flanged Tube White Tube Only	10	50
P22316T	1-1/2"	Flanged Tube w/TPR Washer White	10	50
B22316T	1-1/2"	Flanged Tube w/TPR Washer Black	10	50
B22316D	1-1/2"	Flanged Tube without Nut & Washer	10	50

## Waste Arm Slip Joint



Polypropylene Plastic • 15" Length



- Easy installation
- 1-1/2" diameter inlet
- 15" Length
- Polypropylene plastic construction



PART #	SIZE	DESCRIPTION	INNER	MASTER
P21915	1-1/2" x 15"	Waste Arm Slip Joint White	10	50
B21915	1-1/2" x 15"	Waste Arm Slip Joint Black	10	50
B21909	1-1/2" x 9.5"	Waste Arm Slip Joint Black	10	50
P21816	1-1/2" x 16"	Waste Arm Direct Connect	10	50

# PLASTIC TUBULAR

## End Outlet Tee

**FLEXCRAFT**®

Polypropylene Plastic • 5" Length Baffle Tee



- Easy installation
- 1-1/2" diameter
- Slip joint nuts and washers included
- Polypropylene plastic construction

PART #	SIZE	DESCRIPTION	INNER	MASTER
P21125	1-1/2"x5"	End Outlet Tee	1	50

## J Bend Slip Joint

**FLEXCRAFT**®

Polypropylene Plastic



PART #	SIZE	DESCRIPTION	INNER	MASTER
P12808	1-1/2"	J Bend Slip Joint	1	50

## 90° Slip Elbow

**FLEXCRAFT**®

Polypropylene Plastic



- Includes nuts and washers

PART #	SIZE	DESCRIPTION	INNER	MASTER
P1195	1-1/2"	Slip Elbow White	1	50
B1195	1-1/2"	Slip Elbow Black	1	50

## Double Slip Coupling

**FLEXCRAFT**®

Polypropylene Plastic



PART #	SIZE	DESCRIPTION	INNER	MASTER
P1197	1-1/2"	Double Slip Coupling	1	50

## 3 Way End Outlet Tee

**FLEXCRAFT**®

Polypropylene Plastic

- Slip joint tee connector
- Easy installation
- 1-1/2" diameter
- Slip joint nuts and washers included
- Polypropylene plastic construction



PART #	SIZE	DESCRIPTION	INNER	MASTER
P21515	1-1/2"	3 Way End Outlet Tee	1	50

## P-Bend

**FLEXCRAFT**®

Polypropylene Plastic



- For use in tubular drain applications
- Easy installation
- Repairs sink trap tubing
- Maximum working pressure of 15 psi
- Polypropylene plastic construction

PART #	SIZE	DESCRIPTION	INNER	MASTER
P51278	1-1/2" x 7.8"	P-Bend	1	50

## Repair Trap Slip Joint

**FLEXCRAFT**®

Polypropylene Plastic



PART #	SIZE	DESCRIPTION	INNER	MASTER
P12812R	1-1/2"	J Bend Slip Joint	1	50

## 45° Slip Elbow

**FLEXCRAFT**®

Polypropylene Plastic



- Includes nuts and washers

PART #	SIZE	DESCRIPTION	INNER	MASTER
P1194	1-1/2"	Slip Elbow White	1	50
B1194	1-1/2"	Slip Elbow Black	1	50

## Plastic Air Gap Cap

**FLEXCRAFT**®

Polypropylene Plastic • Chrome Plated



- Easy installation
- 5/8" inlet x 7/8" outlet
- For Dishwasher and Disposer installation
- Universal design
- Polypropylene plastic construction

PART #	SIZE	DESCRIPTION	INNER	MASTER
P18203	5/8" x 7/8"	Plastic Air Gap Cap	1	100

# PLASTIC TUBULAR

## Flex P-Trap



Polypropylene Plastic



- Ideal for repairs
- Easy installation



PART #	SIZE	DESCRIPTION	INNER	MASTER
P12812X	1-1/2"	P-Trap PVC FLEX	1	25

## Flex P-Bend



Polypropylene Plastic



- Ideal for repairs
- Easy installation

PART #	SIZE	DESCRIPTION	INNER	MASTER
P12808X	1-1/2"	P-Bend PVC FLEX	1	25

## Slip Nuts



Polypropylene Plastic



- Easy installation
- For use with slip joint connections
- Available in 1-1/2" & 1-1/4" diameter
- Ideal for white plastic, tubular slip joint connections
- Polypropylene plastic construction



PART #	SIZE	DESCRIPTION	INNER	MASTER
P22612	1-1/2"	Slip Nuts	100	1000
P1314	1-1/4"	Slip Nuts	100	1000
B22612	1-1/2"	Slip Nuts Black	100	1000
B1314	1-1/4"	Slip Nuts Black	100	1000

## Tailpiece Washer



- Easy installation
- 1-1/2" diameter
- Ideal for white plastic, tubular slip joint connections
- For use with slip joint connections



PART #	SIZE	DESCRIPTION	INNER	MASTER
P1324	1-1/2"	Tailpiece Rubber Washer	100	1000

## Flex Extension Tube



Polypropylene Plastic • 12" Length



- Ideal for repairs
- Easy installation



PART #	SIZE	DESCRIPTION	INNER	MASTER
P12412X	1- 1/2" x 12"	Ext. Tube PVC FLEX	1	50

## Trap Wall Flange



Polypropylene Plastic • Box-Style Escutcheon



- Box-style escutcheon
- Easy installation
- 1-1/2" diameter
- Conceals hole around drainage pipe under sink
- Polypropylene plastic construction



PART #	SIZE	DESCRIPTION	INNER	MASTER
P5112	1-1/2"	Trap Flange	1	100

## Rubber Washer



- Easy installation
- Ideal for white plastic, tubular slip joint connections
- For use with slip joint connections



PART #	SIZE	DESCRIPTION	INNER	MASTER
P1323	1- 1/2"	Rubber Washer	100	5000
P1322	1-1/4"	Rubber Washer	100	5000

## Rubber Washer



1-1/2" x 1-1/4"



- Easy installation
- Available in 1-1/2" x 1-1/4" diameter
- Ideal for white plastic, tubular slip joint connections
- For use with slip joint connections



PART #	SIZE	DESCRIPTION	INNER	MASTER
P1321	1- 1/2" x 1-1/4"	Rubber Washer	100	5000

# SHOWER RODS



## “D” Bar Loop

Chrome Plated



- For 1" OD tube

PART #	DESCRIPTION	INNER	MASTER
0241	Used for “D” bar	1	100

## Straight Bar Shower Curtain Rod



Aluminum



- 1" Polished aluminum
- 25 Gauge
- Can be sold with or w/ out all hardware for installation

PART #	DESCRIPTION	INNER	MASTER
0135	1" OD, 5' Long	1	50
0136	1" OD, 6' Long	1	50
0135-S	1" OD, 5' Long, includes flanges	1	50
0136-S	1" OD, 6' Long, includes flanges	1	50

## Shower Rod Frame



L-Type • Aluminum



- 1" Polished aluminum
- 25 Gauge
- Can be sold with or w/ out all hardware for installation

PART #	DESCRIPTION	INNER	MASTER
01451P	1" OD, 5' Long	1	6
01461P	1" OD, 6' Long	1	6
01451PS	1" OD, 5' Long, set includes flanges rods & 24" ceiling support	1	6
01461PS	1" OD, 6' Long, set includes flanges rods & 24" ceiling support	1	6

## Shower Rod Frame



D-Type/U-Type • Aluminum



- 1" Polished aluminum
- 25 Gauge
- 5-Feet long
- Can be sold with or w/ out all hardware for installation

PART #	DESCRIPTION	INNER	MASTER
01551P	“U” bar, 1" OD, 5' Long	1	6
01651P	“D” bar, 1" OD, 5" Long	1	6
01551PS	“U” bar, 1" OD, 5' Long, set includes flanges rods & 24" ceiling support	1	6
01651PS	“D” bar, 1" OD, 5' Long, set includes flanges rods, 24" ceiling support & D loop	1	6

# SHOWER RODS

## Shower Rod Flange

Chrome Plated Steel • Includes Screws

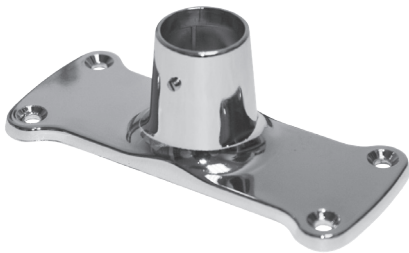


- For 1" OD Rod
- Sold and priced by the pair

PART #	DESCRIPTION	INNER	MASTER
0211	Exposed Screw	1	100

## Jumbo Shower Rod Flange

Chrome Plated Brass • Includes Screws

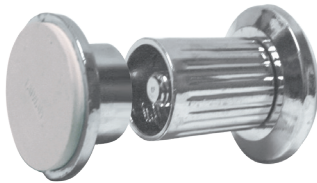


- For 1" OD Rod

PART #	DESCRIPTION	INNER	MASTER
0213	Jumbo Flange	1	100

## Jiffy Flange

Adjustable Shower Rod Flange



- Expands from 1" to 1-1/2"
- Sold and priced by the pair

PART #	DESCRIPTION	INNER	MASTER
0212	Chrome Plated Die-Cast	1	50
0214	Chrome Plated ABS	1	50

## Ceiling Support

Chrome Plated



- Universal loop allows cutting of rod to any length. Set screws in loop eliminates the use of threads.

PART #	DESCRIPTION	INNER	MASTER
02218	18" Long	1	50
02224	24" Long	1	50
02230	30" Long	1	50
02236	36" Long	1	50

## Loop & Flange for Ceiling Support

Chrome Plated • Furnished With Mounting Screws



- No threads, set screw for trimmed support rod
- Fits 1" OD curtain rods

PART #	DESCRIPTION	INNER	MASTER
02318	Ceiling Support Set	1	100

# STRAINERS

## Standard Duo Strainer



Stainless Steel • Individually Boxed w/ Barcode



- Rolled edge basket with stick post
- Fits sinks with 3-1/2" to 4" openings

PART #	SIZE / DESCRIPTION	INNER	MASTER
7511	Die Cast S/J Nut	1	50

## Deep Duo Strainer - Snaplock Basket



Stainless Steel • Individually Boxed w/ Barcode



- Stainless steel basket with rolled edge / Brass slip nut
- Ball bearing snap post for positive water seal
- Galvanized steel locking shell with 1-1/2" brass locknut
- Fits sinks with 3-1/2" to 4" openings

PART #	SIZE / DESCRIPTION	INNER	MASTER
7532	Strainer w/ Snaplock Basket	10	50

## Premium Duo Strainer



Stainless Steel • Individually Boxed w/ Barcode



- Extra thick 8mm rubber locknut washer
- Fits sink with 3-1/2" to 4" opening
- 4 -1/2" flange

PART #	SIZE / DESCRIPTION	INNER	MASTER
7516	Die Cast S/J Nut	1	50

## Double Cup Sink Strainer



Stainless Steel • Individually Boxed w/ Barcode



- Fits sink w/ 3-1/2" – 4" opening – 4-1/2" flange
- 1-1/2" S/J nut

PART #	SIZE / DESCRIPTION	INNER	MASTER
7515	Standard Shank 1-1/4" - 2-7/8" Threads	1	50
7531	Extended Shank 1-7/8" - 3-3/4" Threads	1	50

## Lucky 7 Style Sink Strainer



Stainless Steel Basket • Individually Boxed w/ Barcode



- Metal post heavy lock nut, neoprene stopper
- Extra thick washer, machine cut thread

PART #	SIZE / DESCRIPTION	INNER	MASTER
7514	Die Cast S/J Nut	1	50

## Heavy Duty Brass Sink Strainer



CP Brass Body • Individually Boxed w/ Barcode



- Fits sink with 3-1/2" - 4" opening
- 4-1/2" Flange with brass nuts
- Rolled edge basket with ground joint seal

PART #	SIZE / DESCRIPTION	INNER	MASTER
7512	Brass Body Strainer Assembly	1	25

# STRAINERS

## Heavy Duty Brass Sink Strainer



Kohler Style • Stainless Steel • Individually Boxed w/ Barcode



- Fits sink with 3-1/2" - 4" opening
- 4-1/2" Flange with brass nuts
- Rolled edge basket with ground joint seal

PART #	SIZE / DESCRIPTION	INNER	MASTER
7513	Solid Brass Nut & Lock Nut	1	25

## Spin & Seal



Stainless Steel Body • Individually Boxed w/ Barcode



- Fits sink with 3-1/2" - 4" opening
- 4-1/2" Flange
- Stainless steel threaded post

PART #	SIZE / DESCRIPTION	INNER	MASTER
7541	Die Cast S/J Nut	1	50

## EZ Connect Type



Stainless Steel Body & Basket • Individually Boxed w/ Barcode



- Fits sink with 3-1/2" - 4" opening
- 4-1/2" Flange
- 3 - Bolt flange installation

PART #	SIZE / DESCRIPTION	INNER	MASTER
7521	Die Cast S/J Nut	1	50

## Junior Duo



Stainless Steel • Individually Boxed w/ Barcode



- Fits sink w/ 1-7/8" - 2-1/4" opening
- 1-1/2" basket - 2-1/2" standard shank

PART #	SIZE / DESCRIPTION	INNER	MASTER
7551	Die Cast S/J Nut	1	100

## Bar Style Junior Duo



Stainless Steel • Individually Boxed w/ Barcode



- Fits sink with 1-7/8" - 2-1/4" opening

PART #	SIZE / DESCRIPTION	INNER	MASTER
7552	3" Long Extended Shank	1	100

## Flat Top Strainer



Stainless Steel • Individually Boxed w/ Barcode



- Fits sinks with 3-1/2" to 4" opening

PART #	SIZE / DESCRIPTION	INNER	MASTER
7581	Die Cast S/J Nut	1	100

# STRAINERS & BASKETS

## Flat Top Duplex Strainer



Stainless Steel • Individually Boxed w/ Barcode



- Fits sink with 1-7/8" to 2-1/4" opening
- 2-7/8" Flange

PART #	SIZE / DESCRIPTION	INNER	MASTER
7571	Die Cast S/J Nut	1	100

## Laundry Tray Plug



Individually Boxed w/ Barcode



- Fits sink with 1-7/8" to 2-1/4" opening
- 2-7/8" flange • Rubber stopper

PART #	SIZE / DESCRIPTION	INNER	MASTER
7561	Die Cast S/J Nut	1	100

## Replacement Basket



Rubber Seal • Bagged w/ Barcode



- Fits sink with 1-7/8" to 2-1/4" opening
- 2-7/8" Flange

PART #	SIZE / DESCRIPTION	INNER	MASTER
75111	7511, 7514, 7515, 7531	10	100
7532IN	7532	10	50

## Basket



Rubber Seal • Bagged w/ Barcode



- Fits standard drains
- Replacement basket of stainless steel with spring steel closure

PART #	SIZE / DESCRIPTION	INNER	MASTER
75121	7512	10	100

## Flat Bottom Replacement Basket



Rubber Seal • Bagged w/ Barcode



- Replacement basket of stainless steel

PART #	SIZE / DESCRIPTION	INNER	MASTER
7621	Generic	10	100

## Basket



Rubber Seal • Bagged w/ Barcode



- Fits Kohler strainer (Everflow Item #7513)
- Replacement basket of stainless steel with spring steel closure

PART #	SIZE / DESCRIPTION	INNER	MASTER
75131	7513	10	100

# STRAINER BASKETS

## Spin & Seal Strainer



Stainless Steel • Bagged w/ Barcode



■ Replacement for Everflow item #7541

PART #	SIZE / DESCRIPTION	INNER	MASTER
75411	7541	10	100

## Junior Duo Basket Strainer



Stainless Steel • Bagged w/ Barcode



- For sink with 2" – 2-1/2" openings and bar sinks
- Handles on basket functions as a lever to open and close the drain

PART #	SIZE / DESCRIPTION	INNER	MASTER
75511	7551	10	100

## Strainer Basket



Stainless Steel • Bagged w/ Barcode



PART #	SIZE / DESCRIPTION	INNER	MASTER
75811	7581	10	100

## Sink Strainer



Stainless Steel • Bagged w/ Barcode



PART #	SIZE / DESCRIPTION	INNER	MASTER
7501	1-1/2" - Without Post	10	100
7601	1-1/2" - With Post	10	100

## Basin Strainer



Stainless Steel • Bagged w/ Barcode



PART #	SIZE / DESCRIPTION	INNER	MASTER
7611	1"	10	100

## Wash Tray Strainer



Stainless Steel • Bagged w/ Barcode



PART #	SIZE / DESCRIPTION	INNER	MASTER
7591	1-1/4"	10	100

# LAVATORY DRAINS

## Grid Drain



Polished Chrome • Grid Strainer • With Overflow



PART #	SIZE / DESCRIPTION	INNER	MASTER
3413	1-1/4" x 8" - 20 Gauge	1	25

## Lavatory Drain



Pop-up Assembly • Polished Chrome

- Easy installation with most faucets



PART #	SIZE / DESCRIPTION	INNER	MASTER
3411	Pop-up Assembly - 22 Gauge	1	25

## Grid Drain 17 Gauge



Polished Chrome • Grid Strainer • With Overflow



PART #	SIZE / DESCRIPTION	INNER	MASTER
30-02	1-1/4" x 8" - 17 Gauge	1	30

## Lavatory Drain 17 Gauge



Pop-up Assembly • Polished Chrome

- Easy installation with most faucets



PART #	SIZE / DESCRIPTION	INNER	MASTER
30-01	Pop-up Assembly - 17 Gauge	1	30

## Offset Grid Drain



Polished Chrome • With Overflow • 17 Gauge



PART #	SIZE / DESCRIPTION	INNER	MASTER
30-03	1-1/4" Offset Grid Drain	1	20

## Drain w/ Chain & Stopper



Polished Chrome • Includes Chain & Stopper



PART #	SIZE / DESCRIPTION	INNER	MASTER
30-04	1-1/4" Drain w/ Chain & Stopper	1	30

# LAVATORY DRAINS

**NEW LINE**

## One Touch Pop Up Drain



Polished Chrome · With & W/O Overflow · 17 Gauge



PART #	SIZE / DESCRIPTION	INNER	MASTER
30-05PC	Polished Chrome	1	20
30-06CP	Polished Chrome w/ Overflow	1	20

## One Touch Pop Up Drain



Oil Rubbed Bronze · W/O Overflow · 17 Gauge



PART #	SIZE / DESCRIPTION	INNER	MASTER
30-05ORB	Oil Rubbed Bronze	1	20

## One Touch Pop Up Drain



Brushed Nickel · W/O Overflow · 17 Gauge



PART #	SIZE / DESCRIPTION	INNER	MASTER
30-05BN	Brushed Nickel	1	20

## One Touch Pop Up Drain



Polished Brass · W/O Overflow · 17 Gauge

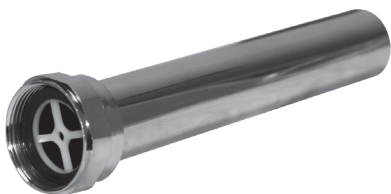


PART #	SIZE / DESCRIPTION	INNER	MASTER
30-05PB	Polished Brass	1	20

## Vacuum Breaker Tailpiece



Closet / Urinal



- Includes vacuum breaker & nut
- CP Brass, Fits Sloan & Zurn flush valves

PART #	DESCRIPTION	INNER	MASTER
81129	1-1/2" x 9"	1	25
81149	1-1/4" x 9"	1	25
81349	3/4" x 9"	1	25
81219	1-1/2" x 21"	1	25
81421	1-1/4" x 21"	1	25

## Flanged Tailpiece



Direct Connect • Brass • UPC Barcode



- CP Brass, Fits Sloan flush valves

PART #	SIZE	FINISH	INNER	MASTER
12612	1-1/4" x 12"	Chrome Plated	1	25

## Vacuum Breaker Repair Kit



Zum Flush Valves, Closet Urinals • Sloan Ref.# V-651A



PART #	SIZE / DESCRIPTION	INNER	MASTER
8112	Vacuum Breaker Repair Kit	25	100

## Vacuum Breaker Nut



Copper Tubing Sizes • Chrome Plated



PART #	SIZE / DESCRIPTION	INNER	MASTER
8113	Chrome Plated Brass	1	100

## Trap Air Vent - Provent



PART #	SIZE / DESCRIPTION	INNER	MASTER
18201	1-1/2" Trap Air Vent	10	400

## Brass Spuds



Brass Body & Nut • Stainless Steel Washer • Friction Ring



PART #	DESCRIPTION	INNER	MASTER
SPUR1034	1" x 3/4" Urinal Spud	15	150
SPUR1434	1-1/4" x 3/4" Urinal Spud	25	150
SPUR0114	1-1/4" Urinal Spud	20	200
PART #	DESCRIPTION	INNER	MASTER
SPCL0112	1-1/2" Closet Spud	25	100
SPCL1214	1-1/2" x 1-1/4" Closet Spud	25	100
SPCL0200	2" Closet Spud	10	100
SPCL2011	2" x 1-1/4" Closet Spud	10	100
SPCL2015	2" x 1-1/2" Closet Spud	10	100

## Universal Tank Lever



PART #	SIZE / DESCRIPTION	INNER	MASTER
3112	Plastic Nut	50	200
3113	Die Cast Nut	50	200

# FLANGES

## Sure Grip Flanges



Chrome Plated



### Copper Tubing Sizes

PART #	SIZE / DESCRIPTION	INNER	MASTER
03158	5/8" OD (1/2" Nom)	25	250
03178	7/8" OD (3/4" Nom)	25	250
031114	1-1/4" OD (1" Nom)	25	250
03012	1-1/2" OD (1-1/4" Nom)	25	250
0302	2" OD (1-1/2" Nom)	25	250

### Steel Pipe Sizes

PART #	SIZE / DESCRIPTION	INNER	MASTER
03138	3/8" IPS	25	250
03112	1/2" IPS	25	250
03134	3/4" IPS	25	250
03111	1" IPS	25	250
03114	1-1/4" IPS	25	250
031112	1-1/2" IPS	25	250
03122	2" IPS	25	250

## Deep Bell Flanges



Chrome Plated



### Copper Tubing Sizes

PART #	SIZE / DESCRIPTION	INNER	MASTER
04158	5/8" OD (1/2" Nom)	25	500

### Steel Pipe Sizes

PART #	SIZE / DESCRIPTION	INNER	MASTER
04138	3/8" IPS	25	500
04112	1/2" IPS	25	500

## Chrome Plated Plastic Split Escutcheon

Snaps Over Pipe for Quick & Easy Installation



## Floor & Ceiling Plates



Chrome Plated



### Copper Tubing Sizes

PART #	SIZE / DESCRIPTION	INNER	MASTER
02158	5/8" OD	12	720
02178	7/8" OD	12	720
041112	1-1/2" OD	12	720

### Steel Pipe Sizes

PART #	SIZE / DESCRIPTION	INNER	MASTER
02138	3/8" IPS	12	720
02112	1/2" IPS	12	720
02134	3/4" IPS	12	720
02111	1" IPS	12	720
02114	1-1/4" IPS	12	720
021112	1-1/2" IPS	12	720
02102	2" IPS	12	720

## Steel Box Flanges



Steel Pipe Sizes · Chrome Plated



### Copper Tubing Sizes

PART #	SIZE / DESCRIPTION	INNER	MASTER
0514	1-1/4" OD (1" Nom)	50	200
05112	1-1/2" OD (1-1/4" Nom)	50	200

### Steel Pipe Sizes

PART #	SIZE / DESCRIPTION	INNER	MASTER
051114	1-1/4" IPS	50	200
0512	1-1/2" IPS	50	200

## EZ-Snap Brass Closet Bolts



- Quick snap off design no hack saw needed
- Solid brass bolts, nuts, & washers
- Plastic grip tight washers



PART #	SIZE / DESCRIPTION	INNER	MASTER
JBEZ-14214	1/4" x 2-1/4" (2pc)	100	200
JBEZ-516214	5/16" x 2-1/4" (2pc)	100	200
JBEZ-516312	5/16" x 3-1/2" (2pc)	100	200

## Closet Bolts



- Nickel plated nuts & washers
- Plastic grip tight washers



PART #	SIZE / DESCRIPTION	INNER	MASTER
JBCB-14214	1/4" x 2-1/4" Brass Plated (2pc)	100	200
JBCB-14312	1/4" x 3-1/2" Brass Plated (2pc)	100	200
JBCB-516214	5/16" x 2-1/4" Brass Plated (2pc)	100	200
JBCB-516312	5/16" x 3-1/2" Brass Plated (2pc)	100	200
S-JBCB-14214	1/4" x 2-1/4" Solid Brass (2pc)	100	200
S-JBCB-14312	1/4" x 3-1/4" Solid Brass (2pc)	100	200
S-JBCB-516214	5/16" x 2-1/4" Solid Brass (2pc)	100	200
S-JBCB-516312	5/16" x 3-1/4" Solid Brass (2pc)	100	200

## ROCM Carrier Caps



- 4 Piece Chrome plated bolt covers
- For wall hung toilet with a 5/8" ithreaded extension
- For use on existing closet carriers when a new wall or toilet is put on and the 5/8" threaded rod does not reach

PART #	SIZE / DESCRIPTION	INNER	MASTER
ROCMCAPS	5/8" (4pcs/set)	1	50

## Aqualoq Masterseal



- Provides a 100% watertight and airtight seal with its extended membrane
- Made of Thermoplastic rubber it will never breakdown



PART #	SIZE / DESCRIPTION	INNER	MASTER
AMS	Aqualoq Masterseal	1	14

## Brass Closet Flange



PART #	SIZE / DESCRIPTION	INNER	MASTER
BRTF4000	4"	1	50
BRTFD400	4" Deep	1	25
BRTF4030	4" x 3"	1	25
BROF4000	4" Offset	1	25
BRTL4030	4" x 3" For Lead	1	25

# CAST IRON FLANGES

## Cast Iron Two Finger Closet Flange



### Push-in Style with Ribbed Gasket

- Flush Fit
- Positive Seal
- Notched and Slotted
- Easy to Install or Adjust
- Seals In Pipe with Up to 4" of Clearance Below The Floor



PART #	SIZE / DESCRIPTION	INNER	MASTER
CR47-320	3" Pipe x 2" Depth Two Finger Flange	1	8
CR47-340	3" Pipe x 4" Depth Two Finger Flange	1	4
CR47-460	4" Pipe x 6" Depth Two Finger Flange	1	4
CR47-420	4" Pipe x 2" Depth Two Finger Flange	1	8
CR47-430	4" Pipe x 3" Depth Two Finger Flange	1	4
CR47-440	4" Pipe x 4" Depth Two Finger Flange	1	4

## Inside Caulk Cast Iron Closet Flange



- Cast Iron Construction
- Notched and Slotted
- Inside Caulk Connection



### Service Weight

PART #	SIZE / DESCRIPTION	INNER	MASTER
CI41-320	3" Pipe x 2" Depth Inside Caulk Closet Flange	1	12
CI41-420	4" Pipe x 2" Depth Inside Caulk Closet Flange	1	12
CI41-430	4" Pipe x 3" Depth Inside Caulk Closet Flange	1	8
CI41-440	4" Pipe x 4" Depth Inside Caulk Closet Flange	1	8

### Reducing

PART #	SIZE / DESCRIPTION	INNER	MASTER
CFCR0403	4" x 3" Pipe x 3" Depth Inside Caulk Closet Flange	1	12

### Extra Heavy 5" No Bead

PART #	SIZE / DESCRIPTION	INNER	MASTER
CFCX4212	4" Pipe x 2-1/2" Depth Inside Caulk Closet Flange	1	12
CFCX0404	4" Pipe x 4" Depth Inside Caulk Closet Flange	1	12
CFCX0406	4" Pipe x 6" Depth Inside Caulk Closet Flange	1	8

## Inside Caulk Cast Iron Closet Flange



### Offset

- 2" Offset
- Cast Iron Construction
- Slotted
- Inside Caulk Connection



PART #	SIZE / DESCRIPTION	INNER	MASTER
CI43-441	2" Offset 4" Pipe x 4" Depth Closet Flange	1	8

## Blue No Caulk Cast Iron Closet Flange



### Blue Coated Quick Set Style

- Cast Iron Construction with Blue Coating
- Notched and Slotted
- Ideal for Both Repair and New Construction
- Four Stainless Steel Bolts and Washers
- Easy to Install - Reduces Installation Time
- Push Over Cast Iron or Plastic Pipe, Anchor to Floor and Tighten Bolts
- Features Ribbed Neoprene Gasket for Easy Installation and Greater Seal



### Blue Coated Quick Set Style

PART #	SIZE / DESCRIPTION	INNER	MASTER
CR40-320	3" Pipe x 2" Depth Blue Closet Flange	1	8
CR40-420	4" Pipe x 2" Depth Blue Closet Flange	1	8
CR40-430	4" Pipe x 3" Depth Blue Closet Flange	1	4
CR40-440	4" Pipe x 4" Depth Blue Closet Flange	1	4

### Blue Coated Quick Set Style Offset



PART #	SIZE / DESCRIPTION	INNER	MASTER
CR40-640	4" Pipe x 1" Deep Blue Offset Closet Flange	1	4

### Blue Coated Quick Set Style W/ Test Cap



PART #	SIZE / DESCRIPTION	INNER	MASTER
CR40-425	4" Pipe x 2" Depth Blue Closet Flange	1	8

## No Hub Cast Iron Closet Flange



### No Hub Connection

- Fits 4" Pipe
- Cast Iron Construction
- Notched and Slotted



PART #	SIZE / DESCRIPTION	INNER	MASTER
CFCNH0403	4" Pipe x 3" Depth No Hub Closet Flange	1	12

# CAST IRON CLEANOUTS

## Plain End Cast Iron Cleanouts



### With Southern Code Brass Plug

- Fits flush with Hub
- Cast Iron Construction
- Countersunk or Raised Head Design
- Includes Brass Plug
- Threads on Body and Plug are NPT



### Countersunk Head Southern Code Plug

PART #	PIPE SIZE	PLUG	HEIGHT	INNER	MASTER
CR39-114	4"	3-1/2"	3"	1	10
CR39-014	4"	3-1/2"	4"	1	8
CR39-006	6"	5"	4"	1	2
CR39-004	4"	3"	4"	1	4

### Raised Head Southern Code Plug



PART #	PIPE SIZE	PLUG	HEIGHT	INNER	MASTER
CR38-104	4"	3" Raised	3"	1	10

### Plain End Cast Iron Cleanout Without Plug

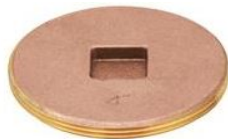


PART #	PIPE SIZE	PLUG	HEIGHT	INNER	MASTER
CR37-314	4"	3-1/2" Tap	3"	1	8

## Countersunk Cleanout Plugs



### Brass Body & Nut



PART #	SIZE / DESCRIPTION	INNER	MASTER
COPC112	1-1/2"	100	200
COPC200	2"	100	200
COPC212	2-1/2"	50	200
COPC300	3"	20	160
COPC312	3-1/2"	20	120
COPC400	4"	10	80
COPC500	5"	10	60
COPC600	6"	10	40
COPC800	8"	10	20

## No Hub Cast Iron Cleanouts



### With Plug

- Heavy Plug
- Cast Iron Construction
- No Hub Cleanout with Plug



PART #	PIPE SIZE	PLUG	HEIGHT	INNER	MASTER
CR38-503	3"	2-1/2" Raised Head	2-1/8"	1	10
CR38-504	4"	3-1/2" Raised Head	2-1/8"	1	10

## No Hub Cast Iron Cleanouts Bodie



- 3-1/2" Tap Size
- Cast Iron Construction
- No Hub Connection



PART #	PIPE SIZE	PLUG	HEIGHT	INNER	MASTER
CR37-104	4"	3-1/2"	2-1/8"	1	10

## Raised Head Cleanout Plugs



### Brass Body & Nut



PART #	SIZE / DESCRIPTION	INNER	MASTER
COPR114	1-1/4"	100	200
COPR112	1-1/2"	100	200
COPR200	2"	100	200
COPR212	2-1/2"	50	200
COPR300	3"	20	160
COPR312	3-1/2"	20	120
COPR400	4"	10	80
COPR500	5"	10	60
COPR600	6"	10	40
COPR800	8"	10	20
COPR010	10"	1	5

# FLANGES

## ABS Closet Flange



Stainless Steel Ring



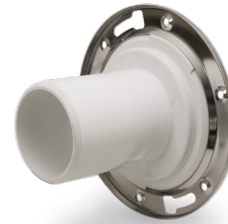
PART #	SIZE / DESCRIPTION	INNER	MASTER
ABS3ST2-1/2	3" Street Flange x 2-1/2" Long	1	12
ABS333SS	3" Street Flange x 4-1/2" Long	1	12
3ST6ABS	3" Street Flange 6" Long	1	12
ABS4325SS	4" Street Flange x 2-1/2" Long	1	12
ABS436SS	4" Street Flange x 6" Long	1	12

\* 4" flanges fit into 4" and over 3" pipe

## PVC Closet Flange



Stainless Steel Ring



PART #	SIZE / DESCRIPTION	INNER	MASTER
PVC3ST2-1/2	3" Street Flange x 2-1/2" Long	1	12
PVC333SS	3" Street Flange x 4-1/2" Long	1	12
3ST6PVC	3" Street Flange 6" Long	1	12
PVC4325SS	4" Street Flange x 2-1/2" Long	1	12
PVC436SS	4" Street Flange x 6" Long	1	12

\* 4" flanges fit into 4" and over 3" pipe

## PVC Offset Closet Flange



PART #	SIZE / DESCRIPTION	INNER	MASTER
PVCOCF	Offset w/ adjustable ring	1	12

## Compression Flange



PART #	SIZE / DESCRIPTION	INNER	MASTER
PVCCCF3	3" Compression Closet Flange	1	12
PVCCCF4	4" Compression Closet Flange	1	12

## 2 Piece Repair Flange



Stainless Steel • For ABS/PVC Closet Flanges



PART #	SIZE / DESCRIPTION	INNER	MASTER
BFR7900	2 Piece repair flange	1	50

## Spanner Flange



Stainless Steel • Elongated Bolt Hole



PART #	SIZE / DESCRIPTION	INNER	MASTER
SSF207	Stainless Steel Spanner Flange	25	100

## Boiler Plug



Lead Tube Plug • Cast Iron Body • Square Head for Wrench



PART #	SIZE / DESCRIPTION	INNER	MASTER
BP200	2"	8	16
BP212	2-1/2"	24	48
BP300	3"	5	10

## Lead Plug



Lead "Fit All" Plug • Cast Iron Body • Square Head for Wrench



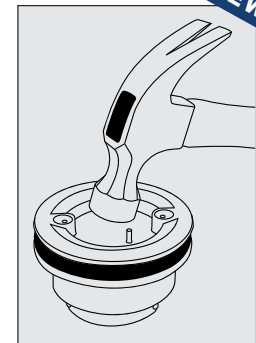
PART #	SIZE / DESCRIPTION	INNER	MASTER
LP200	2"	24	48
LP212	2-1/2"	24	48
LP300	3"	12	24
LP312	3-1/2"	12	24
LP400	4"	6	12
LP412	4-1/2"	6	12
LP500	5"	1	8
LP512	5-1/2"	1	8
LP600	6"	1	8

## Shower Drain With Knockout

**RAVEN**  
SPECIALTY PRODUCTS

- For use with fiberglass and acrylic shower stalls and bases
- Knockout used for pressure testing and also prevents debris from getting into lines

PART #	SIZE / DESCRIPTION	INNER	MASTER
2PVCSHDR	2" PVC	1	24
2ABSHDR	2" ABS	1	24



# CLAMPS

## Half Clamp w/ Nail



- Friction ring
- Durable Polyethylene construction grips



PART #	SIZE / DESCRIPTION	INNER	MASTER
HC012	1/2" with Nail	50	2000
HC034	3/4" with Nail	50	1500
HC001	1" with Nail	50	1000

## Full Pipe Strap w/ Nail



- Friction ring
- Durable Polyethylene construction grips
- Tubing is not damaged if anchor is over driven



PART #	SIZE / DESCRIPTION	INNER	MASTER
PS012	1/2" with Nail	50	2000
PS034	3/4" with Nail	50	1500

## Standard Pipe Clamp



- Plastic 2-Hole pipe clamps
- Isolates tubing from framing



PART #	SIZE / DESCRIPTION	INNER	MASTER
PC012	1/2"	50	2000
PC034	3/4"	50	1000
PC001	1"	50	800
PC114	1-1/4"	50	500
PC112	1-1/2"	50	400
PC002	2"	50	400

## Suspension Clamp



- Plastic 2-Hole pipe clamps
- Isolates tubing from framing



PART #	SIZE / DESCRIPTION	INNER	MASTER
SC012	1/2"	50	1500
SC034	3/4"	50	1200
SC001	1"	50	1000
SC114	1-1/4"	50	800
SC112	1-1/2"	25	600
SC002	2"	25	400

## Metal Stud Insulator



- Reduces noise from tubing expansion
- Supports copper, PEX, CPVC, PB tubing through metal studs
- For use on metal studs 18GA or lighter



PART #	SIZE / DESCRIPTION	INNER	MASTER
MSI012	1/2"	50	1600
MSI034	3/4"	50	1600
MSI001	1"	50	2000

## Pipe Insulator Clamp



- Plastic pipe insulators
- Isolates supply tubing from wood framing



PART #	SIZE / DESCRIPTION	INNER	MASTER
PIC012	1/2"	50	400
PIC034	3/4"	50	400
PIC001	1"	50	400

## Plastic Bend Support



- Plastic with nail tab



PART #	SIZE / DESCRIPTION	INNER	MASTER
PBS012	1/2"	10	400
PBS034	3/4"	10	200

## J-Hook w/ Nail



- Plastic J-hooks
- Includes nails



PART #	SIZE / DESCRIPTION	INNER	MASTER
JH012	1/2"	10	800
JH034	3/4"	10	800
JH112	1-1/2"	10	200
JH002	2"	10	180
JH003	3"	10	120
JH004	4"	10	80

See Piers Catalog  
For Our Full Pipe Hanger Line



# STRAPS

## Galvanized Pipe Strap



2 Hole • IPS



PART #	SIZE / DESCRIPTION	INNER	MASTER
GPS012	1/2"	100	1500
GPS034	3/4"	100	1500
GPS001	1"	100	800
GPS114	1-1/4"	50	500
GPS112	1-1/2"	25	250
GPS002	2"	50	150
GPS212	2-1/2"	25	250
GPS003	3"	20	200
GPS004	4"	10	100

## Galvanized Pipe Strapping



3/4" x 10' • Preforated Hanger



PART #	SIZE / DESCRIPTION	INNER	MASTER
GBI3420	20 GA Galvanized	10	50
GBI3424	24 GA Galvanized	10	50

## PTFE Thread Tape



3.5 mil.



PART #	SIZE / DESCRIPTION	INNER	MASTER
810	1/2" x 260"	100	1000
811	1/2" x 520"	100	1000
814	1/2" x 1080"	50	500
812	3/4" x 260"	100	1000
813	3/4" x 520"	100	1000
815	3/4" x 1080"	50	500

## Copper Tube Strap



2 Hole • 100 Per Bag • Copper Pipe Size



PART #	SIZE / DESCRIPTION	INNER	MASTER
CTS012	1/2"	100	2000
CTS034	3/4"	100	1500
CTS001	1"	100	2000
CTS114	1-1/4"	100	2000
CTS112	1-1/2"	100	2000
CTS002	2"	100	2000

## Copper Pipe Strapping



3/4" x 10' • Preforated Hanger

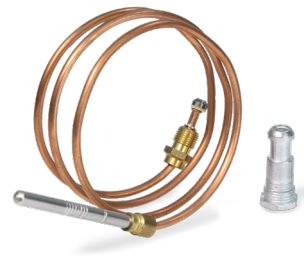


PART #	SIZE / DESCRIPTION	INNER	MASTER
CBI3420	20 GA Copper	10	50
CBI3424	24 GA Copper	10	50

## Universal Thermocouples



Includes Adapter Fittings



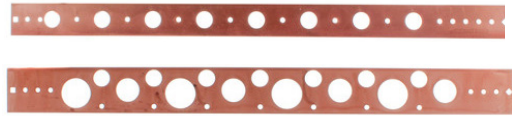
- For gas furnaces and 30 millivolt systems
- Positive positioning for quick insertion
- Heavy-duty, Long-lasting element
- Fits screw-in, clamp-in or push-in type pilot burners

PART #	SIZE / DESCRIPTION	INNER	MASTER
TCP18	18"	1 Carded/25	100
TCP24	24"	1 Carded/25	100
TCP30	30"	1 Carded/25	100
TCP36	36"	1 Carded/25	100
TCP48	48"	1 Carded/25	100

# TAPES

## Copper Stub Bracket

Steel Bracket



- Copper-Bonded, Steel Bracket
- Ideal for lavatory and water closet

PART #	SIZE	INNER	MASTER
STB-C201	1/2" x 20"	1	50
STB-C202	1/2",3/4",1" x 20"	1	50

## Open Mesh Abrasive Cloth

Premium Grade • Water Proof • Heat Resistant



- 180 Grit
- Superior sharpness and wear and tear resistance
- Easily filtering out debris or saw dust

PART #	SIZE / DESCRIPTION	INNER	MASTER
OMSC5	1.5" x 5 Yard	1	100
OMSC10	1.5" x 10 Yard	1	24

## Copper Cleaning Brush

Plastic Handle



PART #	SIZE / DESCRIPTION	INNER	MASTER
5038	3/8"	12	240
5012	1/2"	12	240
5034	3/4"	12	240
5001	1"	12	240
50114	1-1/4"	12	144
50112	1-1/2"	12	144
5002	2"	12	144
50212	2-1/2"	12	144
5003	3"	12	144

## Gorilla PrimaGlue™ Premium PVC Cement

No Primer Required • Odorless • Non-Flammable • Eco-Friendly



- Available in purple and clear
- Cleans up with water



CLEAR #	PURPLE #	SIZE / DESCRIPTION	MASTER
R1583C	R1583P	4 oz.	12
R1584C	R1584P	8 oz.	10
R1585C	R1585P	16 oz.	24
R1586C	R1586P	32 oz.	12

## Submersible Sump Pump



Thermal Overload Protection • Outlet 1-1/4" female or 1-1/2" male



PART #	H.P.	LIFT	FLOW RATE	INNER	MASTER
SPHP13	1/3	24.0 ft	3300 g.p.h	1	3
SPHP12	1/2	26.0 ft	3700 g.p.h	1	3
SPSWITCH	*Sump Pump float switch replacement			1	10

## Submersible Utility Pump



Outlet Fits Garden Hose or 1" FPT • 10 ft. Grounded Power Cord



PART #	H.P.	LIFT	FLOW RATE	INNER	MASTER
UTHP16	1/6	26.3 ft	1370 g.p.h	1	4

## Condensate Pump



Automatic maintenance free operation



PART #	H.P.	FLOW RATE	INNER	MASTER
CPHP18	1/8	85 g.p.h	1	6

## Inside Pipe Cutter Drill Bit

**RAVEN**  
SPECIALTY PRODUCTS



- Easily cuts PVC & ABS
- Cuts from the inside
- Secures tightly into drill

PART #	DESCRIPTION	INNER	MASTER
INPC	2 Blades w/ Hex Drill Bit	24	96
INPC-BLADE	5 Blades for INPC	5	5

## 6 in 1 Screwdriver / Torque Wrench

**RAVEN**  
SPECIALTY PRODUCTS



- Includes 2 sizes torque wrench
- Includes 2 sizes of Philips Heads
- Includes 2 sizes of Flat Heads
- Rubberized easy grip handle

PART #	DESCRIPTION	INNER	MASTER
SCREW616	6 in 1 Box of 6	6	12

# TOOLS

## Tube Cutter

High Quality Blade • Cuts 3/8" to 1" PEX and PVC Pipes



- Easy-To-Use Handle makes cutting simple and effective
- Compact design for use in tight spaces
- Spring loaded handle for quick cutting
- One handed lock hook on handle
- Stainless steel blade
- Professional grade construction
- Convenient pouch carrying case

PART #	SIZE / DESCRIPTION	INNER	MASTER
PSSC-G Red	Cuts Up to 1"	1	1
PSSC-G Gray	Cuts Up to 1"	1	1

## Tube & Hose Cutter

High Quality Blade • For PVC, CPVC, PEX, Flexible Hoses and Plastic Tubes



- For use in cutting tubing 3/8" - 1"
- Minimal effort required for cutting
- Rotation system with steel socket equipped with needle bearings
- Special edge geometry and PTFE coating
- Automatic blade release
- One handed Locking System
- Rubber grip with anti-impact system

PART #	SIZE / DESCRIPTION	INNER	MASTER
MPPC	Cuts Up to 1"	1	1

## XL Tube Cutter

High Quality Blade • For PVC, CPVC, PP, PEX, PE and Multilayer Tubing



- For use in cutting tubing 3/8" - 2"
- Heavy Duty Cutting Tool
- Precise and effortless cutting
- Rubber Grip Handles
- Stainless Steel V-Edge Blade
- Ratchet cutting action
- Long handles for leverage and cutting power

PART #	SIZE / DESCRIPTION	INNER	MASTER
PSBC2	Cuts Up to 2"	1	1

# PREMIUM PTFE TAPE

## High Quality PTFE Sealing Tape

- A new, thicker, professional-grade density
- Protects against rust and corrosion
- Creates a permanent, watertight seal
- Easy to apply

**RAVEN**  
SPECIALTY PRODUCTS



Point of sale display box

Designed for threads made from galvanized steel, iron, brass, copper, aluminum, stainless steel, polyethylene, polypropylene, PVC, CPVC, ABS, fiberglass and more.

Will not harden or crack on the joints



**TOUGHER SEAL**

Raven PTFE polytetrafluoropolyethylene thread sealing tape is a thicker, denser, general-purpose thread seal tape. Fewer wraps are necessary to affect a leak-proof seal and it applies easily. No waste, and no re-taping make sealing joints an easy task. Raven thread sealing tape is manufactured from PTFE resin, a polymer consisting of recurring tetrafluoroethylene monomers (CF<sub>2</sub>-CF<sub>2</sub>)<sub>n</sub> formula.



### White PTFE Sealing Tape

**Composition:** 99.6% PTFE < 0.4%  
**Pigment Color:** White  
**Thickness:** 0.0035" +/- 10%  
**Tensile Strength:** 15N / mm2  
**Density:** 0.8g/cm3



### Gray PTFE Sealing Tape

**Composition:** 99.6% PTFE < 0.4%  
**Pigment Color:** Gray  
**Thickness:** 0.0035" +/- 10%  
**Tensile Strength:** 15N / mm2  
**Density:** 0.8g/cm3

PART #	SIZE	INNER	MASTER
TTC12520	1/2" x 520	25	250
TTC34520	3/4" x 520	25	250
TTC1296	1/2" x 1296	25	250

PART #	SIZE	INNER	MASTER
TTC12520G	1/2" x 520	45	250
TTC34520G	3/4" x 520	45	250
* TTC1296G	1/2" x 1296	63	252
* TTC3496G	3/4" x 1296	45	180

\* Sold in Display Case

# Termination Vent Screens

**BEST  
SELLER**

**PREVENTS  
LEAVES  
DEBRIS &  
WILDLIFE  
FROM ENTERING**

## FEATURES

- Protects vent piping system from clogs
- Prevent pests, & debris from entering vent
- Connects to PVC fitting for flush installation
- No gluing Necessary!
- Slotted channel allows for condensation drainage preventing buildup & freezing
- High Grade Type 304 Stainless Steel Screen



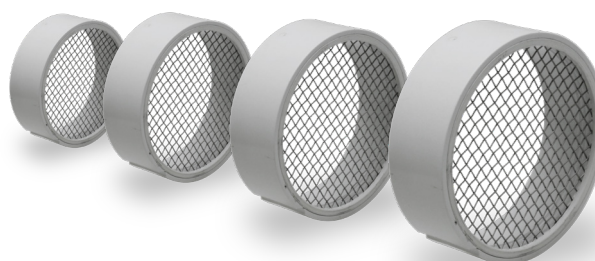
## Termination Vent Screens

**RAVEN**  
SPECIALTY PRODUCTS

Raven Pipe Vent Screens are professionally made to prevent unwanted animals, debris, and leaves from entering plumbing and HVAC vent pipes. Fabricated with schedule 40 PVC and high Grade Type 304 Stainless Steel Screen. The vent cap works excellent as a condensate trap screen and as well as a vent stack guard. Ideal for use on high efficiency heating equipment. No tools or glue is required for assembly. Simply press the vent screen into an existing fitting to seal out pests and unwanted debris. The patented condensate channel allows for proper drainage that prevents a buildup of debris and moisture, preventing freezing of screen.

### Available in 4 Sizes • Stainless Steel Screen

PART #	SIZE	INNER	MASTER
TVS2SS	2"	1	100
TVS3SS	3"	1	100
TVS4SS	4"	1	50
TVS6SS	6"	1	12



■ US Patent # D715,409 S

## 7" Round Fresh Air Plate

PART #	SIZE	INNER	MASTER
250-267	7"	12	48





# The Complete Package





**EVERFLOW™**

Premier PVF & Specialty Products

**Corporate Headquarters:**

100 Middlesex Avenue Carteret, New Jersey 07008

Tel: 908.436.1100 • Fax: 908.436.1162

[www.everflowsupplies.com](http://www.everflowsupplies.com)