



EVERFLOW™

GROOVED FITTINGS



CATALOG



Everflow Grooved Fittings are designed and manufactured to comply with Groove Dimension ANSI/AWWA C606. Grooved mechanical couplings conform to ASTM F1476. Ductile iron pipe couplings and fittings material conform to ASTM A536 Grade 65-45-12. Coatings of Orange Paint or Hot Dipped Galvanized Conforming to ASTM A153. Gasket Grade E EPDM (Green Stripe) -30°F (-34°C) to +230°F (+110°C)



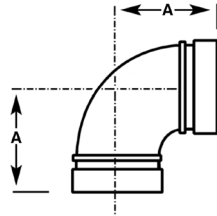
- All fittings are full flow design
- Pressure ratings of fittings tested to an operating pressure of 500psi
- Made of durable, high-strength ductile iron conforming to ASTM A536; every lot is tested for compliance
- Available with hot dipped galvanized coating



GROOVED FITTINGS

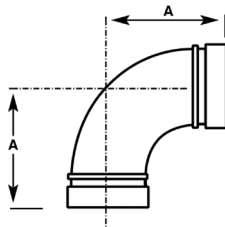
Ductile Iron Conforms to ASTM A 536. Groove Dimension Conforms to AWWA C606. Coatings of Orange Paint or Hot Dipped Galvanized Conforming to ASTM A153. Gasket Grade E EPDM (Green Stripe) -30°F (-34°C) to +230°F (+110°C)

GROOVED 90° ELBOW SHORT RADIUS



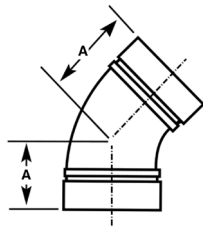
PART #	SIZE	PIPE O.D.	A	WEIGHT	QTY
1048	1-1/4"	1.660	2.362	0.81	75
1040	1-1/2"	1.900	2.362	1.01	75
1041	2"	2.375	2.755	1.25	40
1042	2-1/2"	2.875	2.992	2.04	20
1043	3"	3.500	3.386	2.54	15
1044	4"	4.500	3.996	3.75	7
1047	5"	5.563	4.803	7.21	4
1045	6"	6.625	5.511	9.06	2
1046	8"	8.625	6.889	20.53	1
10410	10"	10.750	8.464	37.04	1

GROOVED 90° ELBOW LONG RADIUS



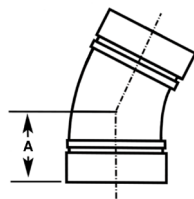
PART #	SIZE	PIPE O.D.	A	WEIGHT	QTY
1120	2"	2.375	3.267	1.76	36
1121	2-1/2"	2.875	3.74	2.76	20
1122	3"	3.500	4.251	3.44	15
1123	4"	4.500	5	5.73	8
1124	5"	5.563	5.511	8.06	4
1125	6"	6.625	6.496	12.57	2
1126	8"	8.625	7.755	21.63	1

GROOVED 45° ELBOW



PART #	SIZE	PIPE O.D.	A	WEIGHT	QTY
1098	1-1/4"	1.660	1.732	0.71	100
1097	1-1/2"	1.900	1.732	0.79	100
1090	2"	2.375	2.007	1.21	45
1091	2-1/2"	2.875	2.244	1.63	32
1092	3"	3.500	2.519	2.38	16
1093	4"	4.500	2.992	3.84	12
1094	5"	5.563	3.276	5.73	6
1095	6"	6.625	3.503	8.11	4
1096	8"	8.625	4.251	14.26	1
10910	10"	10.750	4.763	22.05	1

GROOVED 22.5° ELBOW

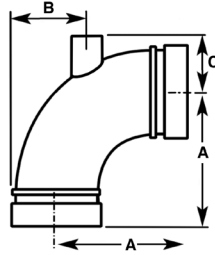


PART #	SIZE	PIPE O.D.	A	WEIGHT	QTY
1170	1-1/4"	1.660	1.732	1.14	50
1171	1-1/2"	1.900	1.732	0.84	50
1161	2"	2.375	2	1.14	40
1162	2-1/2"	2.875	2	1.51	30
1163	3"	3.500	2.244	2.54	20
1164	4"	4.500	2.874	3.91	10
1165	5"	5.563	2.874	5.10	7
1166	6"	6.625	3.11	7.17	4

GROOVED FITTINGS

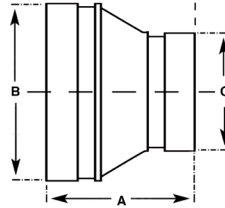
Ductile Iron Conforms to ASTM A 536. Groove Dimension Conforms to AWWA C606. Coatings of Orange Paint or Hot Dipped Galvanized Conforming to ASTM A153. Gasket Grade E EPDM (Green Stripe) -30°F (-34°C) to +230°F (+110°C)

GROOVED DRAIN ELBOW



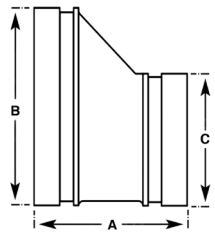
PART #	SIZE	PIPE O.D.	A	B	C	WEIGHT	QTY
1041D	2"	2.375	2.75	2.05	1.85	5.00	40
1042D	2-1/2"	2.875	3.00	2.52	2.09	5.20	20
1043D	3"	3.500	3.39	3.23	2.40	5.30	15
1044D	4"	4.500	4.00	4.29	3.00	8.80	7
1045D	6"	5.563	4.88	5.71	3.39	18.70	2

GROOVED REDUCER



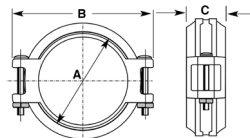
PART #	SIZE	PIPE O.D.	A	B	C	WEIGHT	QTY
1116	2" X 1-1/4"	2.375*1.669	2.52	2	1.25	0.70	50
1113	2" X 1-1/2"	2.375*1.900	2.52	2	1.50	0.72	95
1100	2-1/2" X 2"	2.875x2.375	2.52	2	1.75	1.02	64
1101	3" X 2"	3.500x2.375	2.52	3	2	1.46	48
1102	3" X 2-1/2"	3.500x2.875	2.52	3	2.50	1.32	48
1103	4" X 2"	4.500x2.375	3.00	4	2	2.18	27
1104	4" X 2-1/2"	4.500x2.875	3.00	4	2.50	1.95	27
1105	4" X 3"	4.500x3.500	3.00	4	3	2.05	24
1115	5" X 4"	5.500x4.500	3.50	5	4	2.95	20
1106	6" X 2"	6.500x2.375	4.02	6	2	4.37	16
1107	6" X 2-1/2"	6.500x3.000	4.02	6	2.50	3.97	16
1108	6" X 3"	6.500x3.500	4.02	6	3	4.12	16
1109	6" X 4"	6.500x4.500	4.02	6	4	4.63	16
1110	6" X 5"	6.500x5.500	4.02	6	5	4.37	16

GROOVED ECCENTRIC REDUCER



PART #	SIZE	PIPE O.D.	A	B	C	WEIGHT	QTY
10813	4" X 2-1/2"	4.500x3.000	3.00	4	2.5	2.58	25
10810	4" X 3"	4.500x3.500	3.00	4	3	2.62	25
10811	6" X 4"	6.250x4.250	4.02	6	4	4.81	10
10812	6" X 5"	6.500x5.500	4.02	6	5	5.07	10

GROOVED RIGID COUPLING

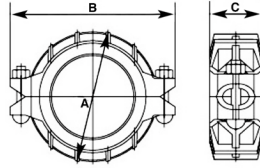
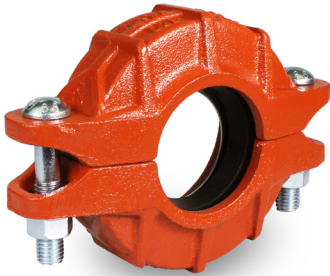


PART #	SIZE	PIPE O.D.	A	B	C	WEIGHT	QTY
1019	1-1/4"	1.669	2.756	4.173	1.732	1.32	72
1017	1-1/2"	1.900	2.874	4.252	1.732	1.21	72
1012	2"	2.375	3.425	4.843	1.732	1.48	40
1011	2-1/2"	2.875	3.937	5.433	1.732	1.68	39
1013	3"	3.500	4.606	6.535	1.772	2.43	30
1014	4"	4.500	5.472	7.480	1.929	2.93	18
1015	5"	5.500	6.614	8.583	1.929	3.57	15
1016	6"	6.500	7.598	9.488	1.929	4.74	9
1018	8"	8.625	9.961	12.598	2.323	8.16	4
10110	10"	10.748	13.189	16.772	2.677	17.08	4

GROOVED FITTINGS

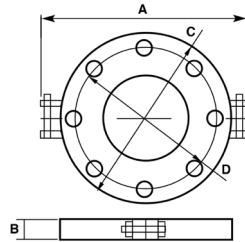
Ductile Iron Conforms to ASTM A 536. Groove Dimension Conforms to AWWA C606. Coatings of Orange Paint or Hot Dipped Galvanized Conforming to ASTM A153. Gasket Grade E EPDM (Green Stripe) -30°F (-34°C) to +230°F (+110°C)

GROOVED REDUCING COUPLING



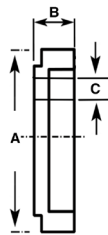
PART #	SIZE	PIPE O.D.	A	B	C	WEIGHT	QTY
1087	2" X 1-1/2"	2.874*1.900	3.976	5.394	1.890	1.96	50
1081	2-1/2" X 2"	2.874*2.375	3.976	5.394	1.890	2.50	32
1084	3" X 2"	3.500*2.375	4.724	6.457	1.890	3.65	24
1082	3" X 2-1/2"	3.500*2.996	4.724	6.457	1.890	3.27	24
1085	4" X 2"	4.500*2.375	5.906	7.677	1.929	4.75	20
1086	4" X 2-1/2"	4.500*2.996	5.906	7.677	1.929	4.55	20
1083	4" X 3"	4.500*3.500	5.906	7.677	1.929	4.16	16

GROOVED FLANGE



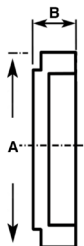
PART #	SIZE	PIPE O.D.	A	B	C	D	WEIGHT	QTY
1032	2"	2.375	8.740	0.906	6.496	4.921	3.93	24
1033	2-1/2"	3.000	9.448	0.906	7.283	5.708	5.18	20
1034	3"	3.500	9.921	0.906	7.559	6.299	6.42	15
1036	4"	4.500	9.763	0.906	8.661	7.086	6.58	12
1037	5"	5.500	12.44	0.944	9.842	8.267	8.78	10
1031	6"	6.625	13.622	0.944	11.22	9.448	8.70	8
1035	8"	8.625	16.456	1.102	13.38	11.614	13.74	5
10310	10"	10.750	20.70	1.130	15.63	13.88	18.20	1

GROOVED DRAIN CAP



PART #	SIZE	PIPE O.D.	A	B	C	WEIGHT	QTY
1060D	2"	2.375x1.327	2	0.99	1	0.66	150
1061D	2-1/2"	2.875x1.327	2.50	0.99	1	0.84	150
1062D	3"	3.500x1.327	3	0.99	1	1.43	100
1063D	4"	4.500x1.327	4	0.99	1	2.09	50
1066D	5"	5.500x2.375	5	0.99	1	3.40	36
1064D	6"	6.625x1.327	6	0.99	1	4.85	18

GROOVED CAP

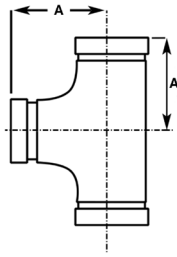


PART #	SIZE	PIPE O.D.	A	B	WEIGHT	QTY
1067	1-1/2"	1.900	1.50	0.88	0.44	200
1060	2"	2.375	2	0.99	0.62	150
1061	2-1/2"	2.875	2.50	0.99	0.86	150
1062	3"	3.500	3	0.99	1.01	100
1063	4"	4.500	4	0.99	1.42	50
1066	5"	5.500	5	0.99	2.80	30
1064	6"	6.625	6	0.99	4.41	18
1065	8"	8.625	8	1.181	9.33	12

GROOVED FITTINGS

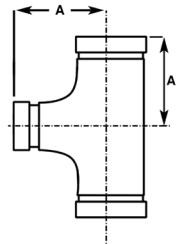
Ductile Iron Conforms to ASTM A 536. Groove Dimension Conforms to AWWA C606. Coatings of Orange Paint or Hot Dipped Galvanized Conforming to ASTM A153. Gasket Grade E EPDM (Green Stripe) -30°F (-34°C) to +230°F (+110°C)

GROOVED TEE



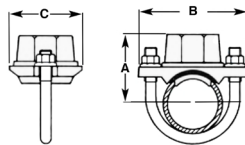
PART #	SIZE	PIPE O.D.	A	WEIGHT	QTY
10502	1-1/4"	1.660	2.755	1.10	60
10501	1-1/2"	1.900	2.755	1.34	60
1050	2"	2.375	3.267	1.98	20
1051	2-1/2"	2.875	3.74	2.82	12
1052	3"	3.500	4.251	3.90	12
1053	4"	4.500	5	5.73	6
1058	5"	5.500	5.511	9.55	2
1054	6"	6.625	6.496	14.13	2
1055	8"	8.625	7.755	27.07	1
10520	10"	10.750	9.015	46.34	1

GROOVED REDUCING TEE



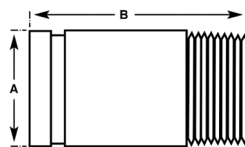
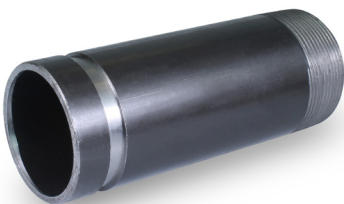
PART #	SIZE	PIPE O.D.	A	WEIGHT	QTY
10511	2" X 1-1/2"	2.875	3.74	1.77	25
10512	2-1/2" X 1-1/2"	2.875	3.74	2.29	20
10513	2-1/2" X 2"	2.875	3.74	2.49	20
10514	3" X 2"	3.500	4.251	3.75	10
10515	3" X 2-1/2"	3.500	4.251	3.85	10
10516	4" X 2"	4.500	5	5.44	5
1059	4" X 2-1/2"	4.500	5	6.17	5
10510	4" X 3"	4.500	5	5.59	5
10517	5" X 2"	5.500	5.511	10.37	3
10524	6" X 2"	6.625	6.496	6.18	4
10523	6" X 2-1/2"	6.625	6.496	13.69	4
1057	6" X 3"	6.625	6.496	13.03	2
10518	6" X 4"	6.625	6.496	12.92	2
10519	6" X 5"	6.625	6.496	16.05	2
1056	8" X 6"	8.625	7.755	25.71	1
10522	10" X 6"	10.750	9.015	61.66	1
10521	10" X 8"	10.750	9.015	62.17	1

GROOVED STRAP TEE U-BOLT



PART #	SIZE	PIPE O.D.	A	B	C	WEIGHT	QTY
1180	1-1/2" X 1"	1.900x1.327	2.283	3.661	2.323	0.99	96

GROOVED X THREADED NIPPLE ADAPTER

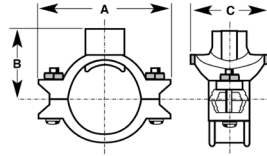
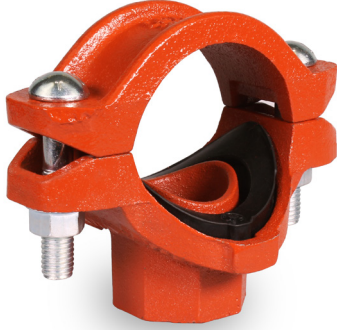


PART #	SIZE	PIPE O.D.	A	B	WEIGHT	QTY
BNTG1160	1-1/4" X 6" - TXG	1.66	0.63	0.31	0.60	50
BNTG1560	1-1/2" X 6" - TXG	1.90	0.63	0.31	1.60	40
BNTG2060	2" X 6" - TXG	2.38	0.63	0.31	2.30	25
BNTG2560	2-1/2" X 6" - TXG	2.88	0.63	0.31	2.60	18
BNTG3060	3" X 6" - TXG	3.50	0.63	0.31	4.70	12
BNTG4060	4" X 6" - TXG	4.50	0.63	0.37	7.00	8
BNTG5060	5" X 6" - TXG	5.56	0.63	0.37	7.00	4
BNTG6060	6" X 6" - TXG	6.63	0.63	0.37	9.10	2

GROOVED FITTINGS

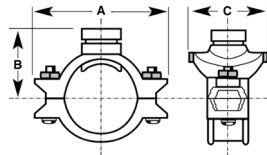
Ductile Iron Conforms to ASTM A 536. Groove Dimension Conforms to AWWA C606. Coatings of Orange Paint or Hot Dipped Galvanized Conforming to ASTM A153. Gasket Grade E EPDM (Green Stripe) -30°F (-34°C) to +230°F (+110°C)

MECHANICAL TEE FEMALE THREADED OUTLET



PART #	SIZE	PIPE O.D.	A	B	C	WEIGHT	QTY
10232	1-1/2" X 1"	1.900x1.327	4.409	2.204	2.401	1.49	100
10230	2" X 1/2"	2.375x0.839	4.567	2.362	2.717	1.46	60
10219	2" X 1"	2.375x1.327	4.567	2.362	2.717	1.54	40
10221	2" X 1-1/4"	2.375x1.669	4.567	2.362	2.717	1.64	40
10220	2" X 1-1/2"	2.375x1.900	4.567	2.362	2.717	1.88	30
10231	2-1/2" X 1/2"	2.874x0.839	5.354	2.441	3.031	1.74	50
10217	2-1/2" X 1"	2.874x1.327	5.354	2.441	3.031	1.98	36
10214	2-1/2" X 1-1/4"	2.874x1.669	5.354	2.441	3.346	2.36	36
1023	2-1/2" X 1-1/2"	2.874x1.901	5.354	2.441	3.346	2.34	36
1024	3" X 1"	3.500x1.327	5.984	3.228	3.031	2.48	24
1025	3" X 1-1/4"	3.500x1.669	5.984	3.228	3.268	2.47	24
1026	3" X 1-1/2"	2.500x1.900	5.984	3.228	3.622	2.61	24
1027	3" X 2"	3.500x2.375	5.984	3.228	3.898	2.96	20
10216	4" X 1"	4.252x1.327	6.772	2.425	3.031	2.87	20
1028	4" X 1-1/4"	4.252x1.669	6.772	3.425	3.268	3.26	14
1029	4" X 1-1/2"	4.252x1.900	6.772	3.425	3.622	3.26	14
10222	4" X 2"	4.252x2.375	6.772	3.425	3.819	3.55	20
10212	4" X 2-1/2"	4.252x2.996	6.772	3.425	4.409	3.59	10
10223	4" X 3"	4.500x3.500	7.402	3.661	4.921	4.85	12
10228	6" X 1"	6.625x1.327	9.724	4.724	3.031	5.30	15
10229	6" X 1-1/4"	6.625x1.669	9.724	4.724	3.228	5.33	15
10225	6" X 1-1/2"	6.625x1.900	9.724	4.724	3.622	5.81	10
10224	6" X 2"	6.625x2.375	9.724	4.724	3.858	5.96	8
10213	6" X 2-1/2"	6.625x2.996	9.724	4.724	4.094	5.32	8
10226	6" X 3"	6.625x3.500	9.724	4.724	5.354	7.32	8
10227	6" X 4"	6.625x4.500	9.724	4.724	5.667	10.0	8
10215	8" X 2-1/2"	8.625x2.996	12.990	4.800	5.980	10.2	4

MECHANICAL TEE GROOVED OUTLET



PART #	SIZE	PIPE O.D.	A	B	C	WEIGHT	QTY
10715	2" X 1-1/2"	2.375x1.900	4.566	2.322	2.716	1.71	50
10716	2-1/2" X 1-1/4"	2.996x1.669	5.669	2.755	3.307	2.48	25
10722	2-1/2" X 1-1/2"	2.996x1.900	5.669	2.755	3.267	2.48	25
10718	3" X 1-1/4"	3.500x1.669	5.984	2.755	3.228	2.51	25
10717	3" X 1-1/2"	3.500x1.900	5.984	2.755	3.582	2.90	25
1078	3" X 2"	3.500x2.375	5.984	3.228	2.402	3.24	16
10720	4" X 1-1/4"	4.500x1.669	7.322	3.661	3.267	3.40	25
10719	4" X 1-1/2"	4.500x1.900	7.322	3.661	3.622	3.16	25
1070	4" X 2"	4.500x2.375	7.402	3.661	3.819	3.31	16
1071	4" X 2-1/2"	4.500x2.874	7.402	3.819	4.843	4.55	10
1074	4" X 3"	4.500x3.500	7.402	3.819	4.921	4.56	12
10721	6" X 1-1/2"	6.625x1.900	9.724	5.039	3.622	5.55	10
10712	6" X 2"	6.625x2.375	9.724	5.039	3.858	6.18	2
1072	6" X 2-1/2"	6.625x2.874	9.724	5.039	4.843	5.34	12
10713	6" X 3"	6.625x3.500	9.724	5.039	5.354	7.32	2
10714	6" X 4"	6.625x4.500	9.724	5.039	6.181	7.61	2
1073	8" X 2-1/2"	8.625x2.874	12.205	5.984	5.118	7.94	4
1076	8" X 4"	8.625x4.500	12.205	5.984	6.378	9.09	4



Sales & Support

Everflow Supplies Inc.

Carteret NJ 07008

T: 908.436.1100

F: 908.436.1162

sales@everflowsupplies.com

Distribution

North East Region

100 Middlesex Ave.

Carteret, New Jersey 07008

Midwest Region

150 S. Fairbank St.

Addison, Illinois 60101

South Central & Western Region

2300 E. Bardin Rd.

Arlington, Texas 76018

South East Region

12101 Harland Dr. NE

Covington, GA 30014

www.everflowsupplies.com