



**EVERCONNECT™**  
FLEXIBLE CONNECTORS

Go with the *FLOW*



## QUALITY

---

Beneath each Everflow label lies our dedication and commitment to bringing you the world's finest engineered products. We search the globe to source our products from some of the world's best manufacturing facilities, where production is done with the highest levels of craftsmanship and quality. Manufacturing facilities conform to ISO 9001 standards. Products meet the highest applicable UL/FM, CSA & ASTM standards.



## SERVICE

---

Everflow customers have become accustomed to our unparalleled level of customer service. Our knowledgeable and courteous staff are always available and ready to provide you with superb service, while helping you get the products & information you need. We keep an extensive inventory on hand, so that when you place your order, you know it's in stock and ready to ship.




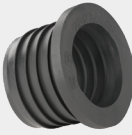














## RELIABILITY

---

Our distribution network is one of the most reliable in the industry. We utilize the most advanced technologies, enabling our customers increased flexibility and faster turnaround on orders. Our state-of-the-art distribution center ensures the efficiency and reliability that you can count on.



TABLE OF CONTENTS				
CATEGORY		PAGE	CATEGORY	PAGE
	<b>No-Hub Couplings Product Data</b>	4-6		<b>Test Plugs</b> 13
	<b>NSF &amp; Standard No-Hub Couplings</b>	7-8		<b>Pipe Hub Donuts</b> 13
	<b>Heavy Duty No-Hub Couplings</b>	9		<b>Drain/Trap &amp; Tubular Connectors</b> 14
	<b>Shielded Transition Couplings</b>	10		<b>Flexible Drain Trap</b> 14
	<b>Flexible PVC Shear Ring Couplings</b>	11		<b>Washer Hose Gripper</b> 14
	<b>Flexible Clay to Cast Iron Couplings</b>	12		<b>Water Test Cap &amp; Hose Bib</b> 15
	<b>Flexible Tees &amp; Elbows</b>	13		<b>Sump Pump Check Valves</b> 15
	<b>Flexible Pipe Caps</b>	13		<b>No-Hub Torque Wrench</b> 15

## STANDARD NSF APPROVED NO-HUB COUPLING DATA SHEET

### Standard NSF Approved No-Hub Couplings

Can be used to assemble No-Hub Pipe and Fittings manufactured per ASTM A 888. The couplings consist of a gasket made of an elastomeric compound enclosed in a corrugated stainless steel shield. Depending on the size of the shield, two or four clamps are provided to give the required sealing force to the shield to seal the gasket on the pipes and fittings.

#### Marking, Certification, Standards:

- Tested and certified to ASTM-C 1277, NSF certified to CISPI 310, and CSA B602 IAPMO Listed. Tested and certified by Intertek to CAN/ULC S102.2-07
- Elastomeric compound gasket conforms to standard ASTM C 564



Size	Shield Width	Installation Torque	No. of Clamps Per
1-1/2"	2-1/8"	60	2
2"	2-1/8"	60	2
3"	2-1/8"	60	2
4"	2-1/8"	60	2
5"	3"	60	4
6"	3"	60	4
8"	4"	60	4

Material	
<b>Band</b>	SS304 Stainless Steel
<b>Screw</b>	5/16" Hex head made of SS304 Stainless Steel
<b>Housing</b>	SS304 Stainless Steel
<b>Shield</b>	0.007" Thick corrugated design SS301 Stainless Steel
<b>Gasket</b>	Elastomeric Compound Conforming to ASTM C 564

#### Installation Instructions:

1. Place gasket on the end of one pipe and clamp the assembly over the other pipe.
2. Fit second hubless pipe end into gasket, firmly putting both ends against the rib, or shoulder, in the center of the gasket. Make certain the pipe and/or fitting to be joined are in proper alignment, then slide the loose coupling over the gasket so that the gasket is completely covered.
3. Using a calibrated torque wrench, tighten the stainless steel screws alternately to the proper torque pounds (60 inch lbs. torque).

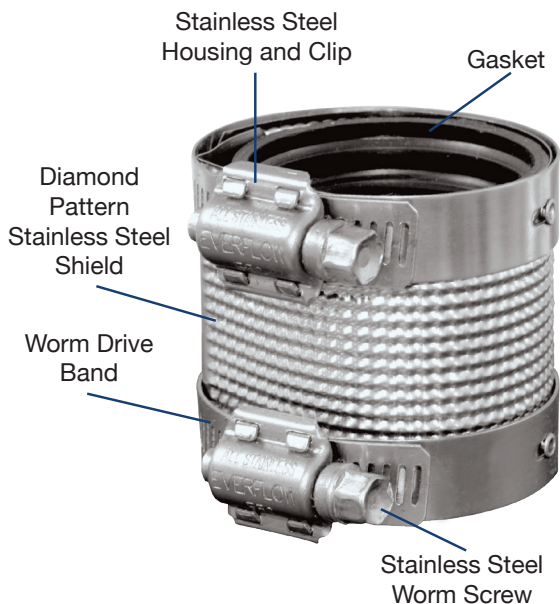
## STANDARD NO-HUB COUPLING DATA SHEET

### Standard No-Hub Pipe Couplings

Can be used to assemble No-Hub Pipe and Fittings manufactured per ASTM A 888. The couplings consist of a gasket made of an elastomeric compound enclosed in a diamond pattern stainless steel shield. Depending on the size of the shield, two or four clamps are provided to give the required sealing force to the shield to seal the gasket on the pipes and fittings.

#### Marking, Certification, Standards:

- Product standard ASTM C 1277 and CISPI 310
- High quality elastomeric compound gasket conforming to standard ASTM C 564
- IAPMO and CSA certification



Size	Shield Width	Installation Torque	No. of Clamps Per
1-1/2"	2-1/8"	60	2
2"	2-1/8"	60	2
3"	2-1/8"	60	2
4"	2-1/8"	60	2
5"	3"	60	4
6"	3"	60	4
8"	4"	60	4
10"	4"	60	4
12"	5.43"	60	6
15"	5.43"	60	6
1-1/2" x 2"	2-1/8"	60	2
2" x 3"	2-1/8"	60	2
4" x 2"	2-1/8"	60	2
4" x 3"	2-1/8"	60	2

Material	
<b>Band</b>	SS304 Stainless Steel
<b>Screw</b>	5/16" Hex head made of SS304 Stainless Steel
<b>Housing</b>	SS304 Stainless Steel
<b>Shield</b>	0.007" Thick diamond design SS301
<b>Gasket</b>	Elastomeric Compound Conforming to ASTM C 564

#### Installation Instructions:

1. Place gasket on the end of one pipe and clamp the assembly over the other pipe.
2. Fit second hubless pipe end into gasket, firmly putting both ends against the rib, or shoulder, in the center of the gasket. Make certain the pipe and/or fitting to be joined are in proper alignment, then slide the loose coupling over the gasket so that the gasket is completely covered.
3. Using a calibrated torque wrench, tighten the stainless steel screws alternately to the proper torque pounds (60 inch lbs. torque).

## HEAVY DUTY NO-HUB COUPLING DATA SHEET

### Heavy Duty No-Hub Pipe Couplings

Can be used to assemble No-Hub Pipe and Fittings manufactured per ASTM A 888. The couplings consist of a gasket made of an elastomeric compound enclosed in a corrugated pattern stainless steel shield. Depending on the size of the shield, four or six clamps are provided to give the required sealing force to the shield to seal the gasket on the pipes and fittings.

#### Marking, Certification, Standards:

- Product standard ASTM C 1540 and CISPI 310
- High quality elastomeric compound gasket conforming to standard ASTM C 564
- All metal components made of stainless steel standard ASTM C 1540



Size	Shield Width	Installation Torque	No. of Clamps Per
2"	2-1/8"	80	4
3"	2-1/8"	80	4
4"	2-1/8"	80	4
5"	3"	80	6
6"	3"	80	6
8"	4"	80	6
10"	4"	80	6
12"	5.43"	80	6
15"	5.43"	80	6

Material	
<b>Band</b>	SS304 Stainless Steel
<b>Screw</b>	5/16" Hex head made of SS304 Stainless Steel
<b>Housing</b>	SS304 Stainless Steel
<b>Shield</b>	0.008" Thick corrugated design SS301
<b>Gasket</b>	Elastomeric Compound Conforming to ASTM C 564

#### Installation Instructions:

1. Place gasket on the end of one pipe and clamp the assembly over the other pipe.
2. Fit second hubless pipe end into gasket, firmly putting both ends against the rib, or shoulder, in the center of the gasket. Make certain the pipe and/or fitting to be joined are in proper alignment, then slide the loose coupling over the gasket so that the gasket is completely covered.
3. Using a calibrated torque wrench, tighten the stainless steel screws alternately to the proper torque pounds (80 inch lbs. torque).



▪ **EVERCONNECT 14N Series**

NSF approved no-hub couplings are manufactured using 304 series stainless steel bands attach to corrugated pattern stainless steel shield over molded one-piece elastomer sealing gasket. They provide the perfect fit for joining hub-less cast iron soil pipe and fittings in drain waste & vent applications. Longer slots on clamping band provide greater adaptability to varying cast iron pipe diameters. Lightweight and easy to install, by tightening worm screw to 60 inch lbs. torque. 14N Series couplings are tested and certified to ASTM C1277, NSF certified to CISPI 310 and CSA B602 standards, and certified to CAN/ULC S102.2-07

## STANDARD NSF APPROVED NO-HUB PIPE COUPLINGS

### FEATURES

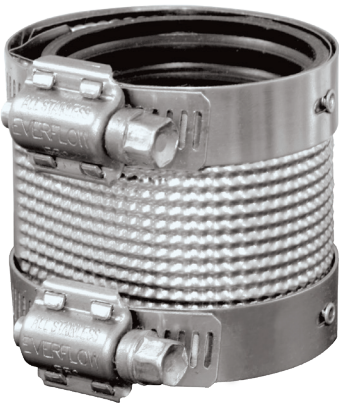
- 304 Series stainless steel bands
- NSF Certified to CISPI 310 CSA B602
- Certified by Intertek to CAN/ULC S102.2-07
- Tested and Certified to ASTM C1277
- Elastomeric Gasket conforms to ASTM C564
- Max Water Pressure: 4.3 PSI
- Tighten with 5/16" Hex Driver to 60 in-lbs torque



PART #	DESCRIPTION	PACKING
14112N	1-1/2" No-Hub Coupling	100
14200N	2" No-Hub Coupling	100
14300N	3" No-Hub Coupling	100
14400N	4" No-Hub Coupling	100
14500N	5" No-Hub Coupling	20
14600N	6" No-Hub Coupling	25
14800N	8" No-Hub Coupling	15
1410N	10" No-Hub Coupling	12
1412N	12" No-Hub Coupling	8
1415N	15" No-Hub Coupling	4

# NO-HUB COUPLINGS

## STANDARD NO-HUB PIPE COUPLINGS



### FEATURES

- 304 Series stainless steel bands attach to diamond pattern stainless steel shield over molded one-piece elastomer sealing gasket
- Provides the perfect fit for joining hub-less cast iron soil pipe and fittings in drain waste & vent applications
- Longer slots on clamping band to provide greater adaptability to varying cast iron pipe diameters
- Lightweight and easy to install, by tightening worm screw to 60 inch lbs. torque
- Conforms to ASTM C 1277
- Meets or exceeds all CISPI 310 specifications



PART #	DESCRIPTION	PACKING
14112	1-1/2" No-Hub Coupling	100
14200	2" No-Hub Coupling	100
14300	3" No-Hub Coupling	100
14400	4" No-Hub Coupling	100
14500	5" No-Hub Coupling	20
14600	6" No-Hub Coupling	25
14800	8" No-Hub Coupling	15
1410	10" No-Hub Coupling	12
1412	12" No-Hub Coupling	8
1415	15" No-Hub Coupling	4
REDUCING		
14212	2" x 1-1/2" No-Hub Coupling	100
1432	3" x 2" No-Hub Coupling	100
1442	4" x 2" No-Hub Coupling	64
1443	4" x 3" No-Hub Coupling	64
1454	5" x 4" No-Hub Coupling	20

## NO-HUB PIPE COUPLINGS - ECONOMY VERSION



### FEATURES

- Lightweight and easy to install, by tightening worm screw to 60 inch lbs. torque
- Conforms to ASTM C 1277
- Meets or exceeds all CISPI 310 specifications

PART #	DESCRIPTION	PACKING
14112C	1-1/2" No-Hub Coupling	100
14200C	2" No-Hub Coupling	100
14300C	3" No-Hub Coupling	100
14400C	4" No-Hub Coupling	100

## HEAVY DUTY NO-HUB PIPE COUPLINGS



### FEATURES

- 304 Series stainless steel bands attach to Heavy Duty corrugated stainless steel shield over molded one-piece elastomer sealing gasket
- Heavy-Duty stainless steel coupling for joining No-Hub cast iron soil pipe and fittings
- Multiple sealing clamps tighten independently for better load distribution and a more positive seal
- Axially slotted heavy duty worm drive clamps tightened to 80 inch lbs. torque
- Flanged elastomer sealing gasket conforms to ASTM C 564 standard
- Meets ASTM C 1540 and specification for heavy duty shielded couplings



PART #	DESCRIPTION	PACKING
15200	2" H/D No-Hub Coupling	75
15300	3" H/D No-Hub Coupling	48
15400	4" H/D No-Hub Coupling	48
15500	5" H/D No-Hub Coupling	15
15600	6" H/D No-Hub Coupling	15
15800	8" H/D No-Hub Coupling	15
1510	10" H/D No-Hub Coupling	10
1512	12" H/D No-Hub Coupling	8
1515	15" H/D No-Hub Coupling	4

## HEAVY DUTY - COLOR SHIELDED NO-HUB PIPE COUPLINGS



### FEATURES

- 304 Series stainless steel bands attach to Heavy Duty corrugated stainless steel shield over molded one-piece elastomer sealing gasket
- Heavy-Duty stainless steel coupling for joining No-Hub cast iron soil pipe and fittings
- Red color shield for easy identification
- Multiple sealing clamps tighten independently for better load distribution and a more positive seal
- Axially slotted heavy duty worm drive clamps tightened to 80 inch lbs. torque
- Flanged elastomer sealing gasket conforms to ASTM C 564 standard
- Meets ASTM C 1540 and specification for heavy duty shielded couplings



PART #	DESCRIPTION	PACKING
15112CS	1-1/2" H/D Color Shield No-Hub Coupling	75
15200CS	2" H/D Color Shield No-Hub Coupling	75
15300CS	3" H/D Color Shield No-Hub Coupling	48
15400CS	4" H/D Color Shield No-Hub Coupling	48
15500CS	5" H/D Color Shield No-Hub Coupling	15
15600CS	6" H/D Color Shield No-Hub Coupling	15
15800CS	8" H/D Color Shield No-Hub Coupling	15
1510CS	10" H/D Color Shield No-Hub Coupling	10
1512CS	12" H/D Color Shield No-Hub Coupling	8
1515CS	15" H/D Color Shield No-Hub Coupling	4

# TRANSITION COUPLINGS

EVERCONNECT™

- Makes transition pipe connections while creating rigid and long lasting pipe joints.
- Designed to support heavy loads and provides improved pipe alignment.



- From 1-1/2" to 8" pipe diameter - transition coupling connects cast iron, plastic, steel, copper and tubular, drain waste and vent systems for above-ground applications.

## SHIELDED TRANSITION COUPLINGS

### FEATURES

- Lightweight and easy to install, by tightening worm screw to 60 inch lbs. torque
- 0.12" thick 301 Series stainless steel shield
- 304 Series stainless steel clamps
- Elastomeric rubber gasket conforms to ASTM C 564
- Conforms to ASTM C 1460



PART #	DESCRIPTION	PACKING
16003	3" PL, ST or XHCI to 3" CPR Transition Coupling	24
16033	3" PL, ST or XHCI to 3" PL, ST, or XHCI Transition Coupling	24
16044	4" PL, ST or XHCI to 4" PL, ST, or XHCI Transition Coupling	24
16112	1-1/2" Tubular to 1-1/2" CI, PL, ST Transition Coupling	24
16115	1-1/2" CI, PL or ST to 1-1/2" CPR or 1-1/4" PL Transition Coupling	24
16122	1-1/2" Tubular to 2" CI, PL or ST Transition Coupling	24
16215	2" CI, PL or ST to 1-1/2" Copper Transition Coupling	24
16200	2" CI, PL or ST to 2" PL, ST Transition Coupling	24
16215	2" CI, PL or ST to 1-1/2" Copper Transition Coupling	24
16222	2" CI, PI or ST to 2" CPR Transition Coupling	24
16300	3" CI to 3" PI, ST, XHCI Transition Coupling	24
16333	3" CI to 3" CPR Transition Coupling	24
16400	4" CI to 4" PI, ST, XHCI Transition Coupling	24
16444	4" CI to 4" CPR Transition Coupling	24
16500	5" CI to 5" PL, ST, XHCI Transition Coupling	24
16600	6" CI to 6" PL, ST, XHCI Transition Coupling	24
16800	8" CI to 8" PL, ST, XHCI Transition Coupling	24

CI: Cast Iron PL: Sch 40. Plastic ST: Steel XHCI: Extra-Heavy Cast Iron CPR: Copper TUB: Tubular

## Flexible Coupling with EXTRA STRENGTH

*Designed to resist heavy earth loads and shear forces. Stainless steel shear rings add extra strength and stability in unstable ground conditions.*



### FLEXIBLE PVC SHEAR RING COUPLINGS



#### FEATURES

- .012" thick 300 Series stainless steel shield
- Easy to install, 60 inch lbs. torque
- Connects pipe of same or different sizes and materials
- Flexible PVC body
- 140°F Maximum operating temperature
- 4.3 PSI maximum test pressure
- Gasket conforms to ASTM C 1173, ASTM D 5926, CSA B602
- Conforms to ASTM C 1173, CSA B602



PART #	DESCRIPTION	PACKING
6015	1-1/2" Flexible Coupling with SS Shear Rings	20
6020	2" Flexible Coupling with SS Shear Rings	20
6030	3" Flexible Coupling with SS Shear Rings	20
6040	4" Flexible Coupling with SS Shear Rings	20
6060	6" Flexible Coupling with SS Shear Rings	20

### Shear Ring Coupling Benefits

- Resists heavy earth loads and shear forces
- Provides improved pipe alignment
- Quick and simple connection
- Makes rigid and long lasting joints
- Connects same or different pipe material

# FLEXIBLE CONNECTORS

EVERCONNECT™

- Flexible connectors ensures leak-proof pipe seal on virtually any pipe material.
- Connects same or different pipe sizes quickly and easily.
- Corrosion-resistant stainless steel clamps ensure secure and safe connection.
- Flexible PVC gasket provides positive seal against infiltration and exfiltration



## FLEXIBLE COUPLINGS

### FEATURES

- Elastomeric Polyvinyl Chloride (PVC) Gasket, 300 Series stainless steel clamps
- Connects DWV piping, cast iron, plastic, copper or schedule 40 steel pipe
- Flexes with ground movement
- Conforms to ASTM C 1173, CSA B 602



PART #	DESCRIPTION	PACKING
4842	3/4" Flexible Coupling	100
4822	1" Flexible Coupling	100
4823	1-1/4" Flexible Coupling	100
4824	1-1/2" Flexible Coupling	100
4825	2" Flexible Coupling	100
4826	3" Flexible Coupling	90
4827	4" Flexible Coupling	50
4820	5" Flexible Coupling	100
4828	6" Flexible Coupling	15
4839	8" Flexible Coupling	20
REDUCING		
4829	1-1/2" x 1-1/4" Reducing Coupling	100
4830	2" x 1-1/4" Reducing Coupling	100
4831	2" x 1-1/2" Reducing Coupling	100
4832	3" x 1-1/2" Reducing Coupling	60
4833	3" x 2" Reducing Coupling	24
4834	4" x 1-1/2" Reducing Coupling	50
4835	4" x 2" Reducing Coupling	24
4836	4" x 3" Reducing Coupling	50
4837	5" x 4" Reducing Coupling	25
4838	6" x 4" Reducing Coupling	25
4840	8" x 4" Reducing Coupling	20
4841	8" x 6" Reducing Coupling	20
4846	6" x 5" Reducing Coupling	20
4847	5" x 3" Reducing Coupling	20
4848	6" x 3" Reducing Coupling	20

## CLAY TO CAST IRON OR PVC COUPLINGS



### FEATURES

- Elastomeric Polyvinyl Chloride (PVC) Gasket, 300 Series stainless steel clamps
- Connects DWV piping, cast iron, plastic, copper or schedule 40 steel pipe
- Flexes with ground movement
- Conforms to ASTM C 1173, CSA B 602



PART #	DESCRIPTION	PACKING
4867	C.I./PVC 4" x Clay 4"	30
4868	C.I./PVC 4" x Clay 6"	20
4869	C.I./PVC 6" x Clay 6"	20

## FLEXIBLE TEES



### FEATURES

- Elastomeric Polyvinyl Chloride (PVC) Gasket, 301 Series stainless steel clamps
- Flexible for easier installation
- Perfect for replacing fittings that have been cut out at the joint
- Extra length for easier retrofit
- Conforms to CSA B 602



PART #	DESCRIPTION	PACKING
4856	1-1/2" Tee	30
4857	2" Tee	50
4858	3" Tee	10
4859	4" Tee	100

## FLEXIBLE ELBOWS



### FEATURES

- Elastomeric Polyvinyl Chloride (PVC) Gasket, 301 Series stainless steel clamps
- Flexible for easier installation
- Perfect for replacing fittings that have been cut out at the joint
- Extra length for easier retrofit
- Conforms to CSA B 602



PART #	DESCRIPTION	PACKING
4852	1-1/2" Elbow	50
4853	2" Elbow	50
4854	3" Elbow	25
4855	4" Elbow	25

# FLEXIBLE CONNECTORS

## FLEXIBLE PIPE CAPS



### FEATURES

- Elastomeric Polyvinyl Chloride (PVC) Gasket, 301 Series stainless steel clamps
- Connects DWV piping, cast iron, plastic, copper or schedule 40 steel pipe
- Conforms to CSA B 602



PART #	DESCRIPTION	PACKING
17112	1-1/2" Pipe Cap	100
1720	2" Pipe Cap	100
1730	3" Pipe Cap	50
1740	4" Pipe Cap	50
1750	5" Pipe Cap	40
1760	6" Pipe Cap	40
1780	8" Pipe Cap	40
1710	10" Pipe Cap	40
1712	12" Pipe Cap	40

## TEST PLUGS



### FEATURES

- Installs into pipe to test for leaks
- Galvanized steel flange with molded rubber gasket
- Wing nut for easy installation
- Use for plastic, cast iron, steel or iron pipe



PART #	DESCRIPTION	PACKING
18112	1-1/2" Test Plug	200
1820	2" Test Plug	100
1830	3" Test Plug	50
1840	4" Test Plug	50
1860	6" Test Plug	50

## PIPE HUB DONUTS



### FEATURES

- Used for compression sealing of sewer pipe joints and DWV connections
- Creates a strong lasting joint
- Made of elastomeric compound
- Corrosion proof



PART #	DESCRIPTION	PACKING
4860	2" x 2" Hub Donut	100
4862	3" x 2" Hub Donut	50
4861	3" x 3" Hub Donut	50
4864	4" x 3" Hub Donut	50
4863	4" x 4" Hub Donut	50

## WASHER HOSE GRIPPER



### FEATURES

- Securely attaches a washing machine hose to a drain pipe
- Vents to allow for air flow
- Prevents washer hose leaks



PART #	DESCRIPTION	PACKING
4866	Washer Hose Gripper	100

## DRAIN / TRAP & TUBULAR CONNECTORS



### FEATURES

- Use in new installation or repair
- Connects sink traps to hose drain pipe
- Connects DWV piping to brass or PVC tubular



PART #	DESCRIPTION	PACKING
4812	1-1/2" x 1-1/4"	50
4813	2" x 1-1/2"	50
PART #	DESCRIPTION	PACKING
4814	1-1/2" Tub x 1-1/2" Tub	50

## FLEXIBLE DRAIN TRAP



### FEATURES

- Replaces plastic or metal drain traps
- Easy, fast and secure installation



PART #	DESCRIPTION	PACKING
4865	1-1/2" Flex drain trap	36

## WATER TEST CAP & HOSE BIB



### FEATURES

- Jim Cap w/ hose bib
- Allows for easy testing & draining of system
- Rubber cap w 1/4 turn hose fitting
- Made from durable rubber material
- Stainless steel band & clamp
- Not for use with potable water

**RAVEN**  
SPECIALTY PRODUCTS

PART #	DESCRIPTION	PACKING
WTC112	1-1/2"	1
WTC2	2"	1
WTC3	3"	1
WTC4	4"	1

## SUMP PUMP CHECK VALVES



### FEATURES

- Stainless steel clamps
- Strong and durable body
- Durable flapper design checks back flow of water and sewer gas
- Easy-slip fit design makes simple installation
- Can be installed in vertical or horizontal configuration

**RAVEN**  
SPECIALTY PRODUCTS


PART #	DESCRIPTION	PACKING
SPCV112	1-1/2" x 1-1/4"	50
SPCV22	2" x 2"	50

## NO-HUB TORQUE WRENCH



### FEATURES

- Tightens coupling bands
- Automatic release at 60 inch lbs. torque
- Ratchet mechanism
- Reversing lever

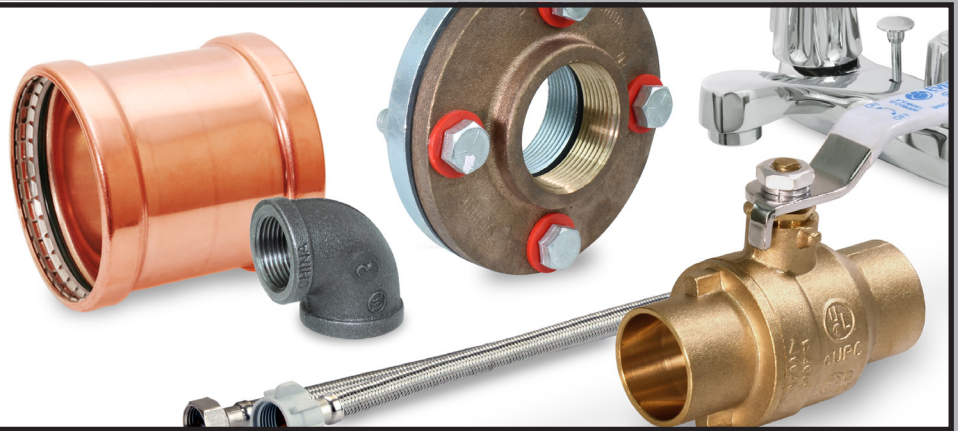
PART #	DESCRIPTION	PACKING
1400	No-Hub Torque Wrench	100



# OUR COMPANY BRANDS



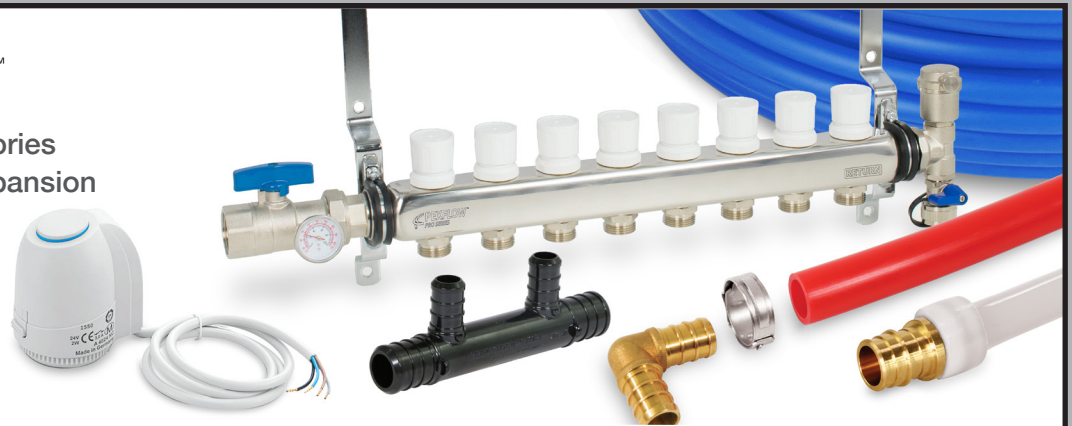
Our Flagship Brand of Quality  
Valves, Fittings & Plumbing  
Specialties



Flexible Connectors  
& No-Hub Couplings



Pex Tub, and Accessories  
Crimp Pex & Cold Expansion



Push to Connect  
Valves & Fittings





Specialty Valves, Tools  
& Hydronic Solutions



Gas Appliance Valves,  
Connectors  
& Expansion Tanks



Polypropylene  
Plastic Tubular



Pipe Hangers, Clamps,  
Strut, Threaded Rod  
& Accessories



# EVERCONNECT™



Tel: 908.436.1100 Fax: 908.436.1162

[www.everflowsupplies.com](http://www.everflowsupplies.com)

